

SANTAGOSTINO

a project for a new Cultural Centre in Modena



Alessandro Bertoni
library consultant



THE CONTEXT



Baluardo della Cittadella

P Parco archeologico
Novi Ark

Giardino Ducale e Orto Botanico

Fondazione
Universitaria
Marco Biagi

Facoltà di economia Marco Biagi

Palazzo Ducale
Accademia Militare

Palazzo dei Musei

Fondazione Cassa
Risparmio di Modena

Palazzo
Santa Margherita

Teatro Comunale

Facoltà Lettere ed Filosofia
Dipartimento Scienze della Terra

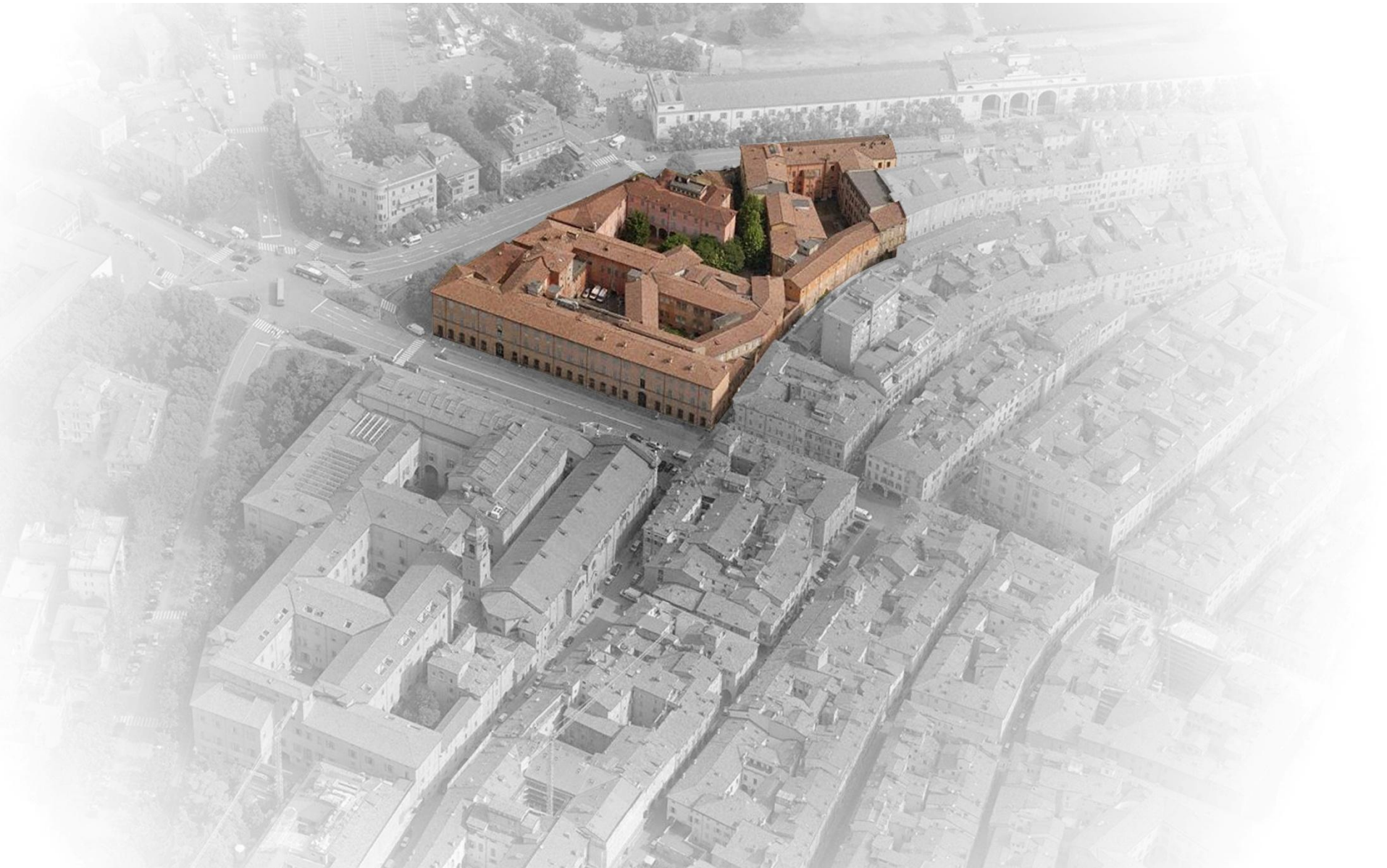
Duomo

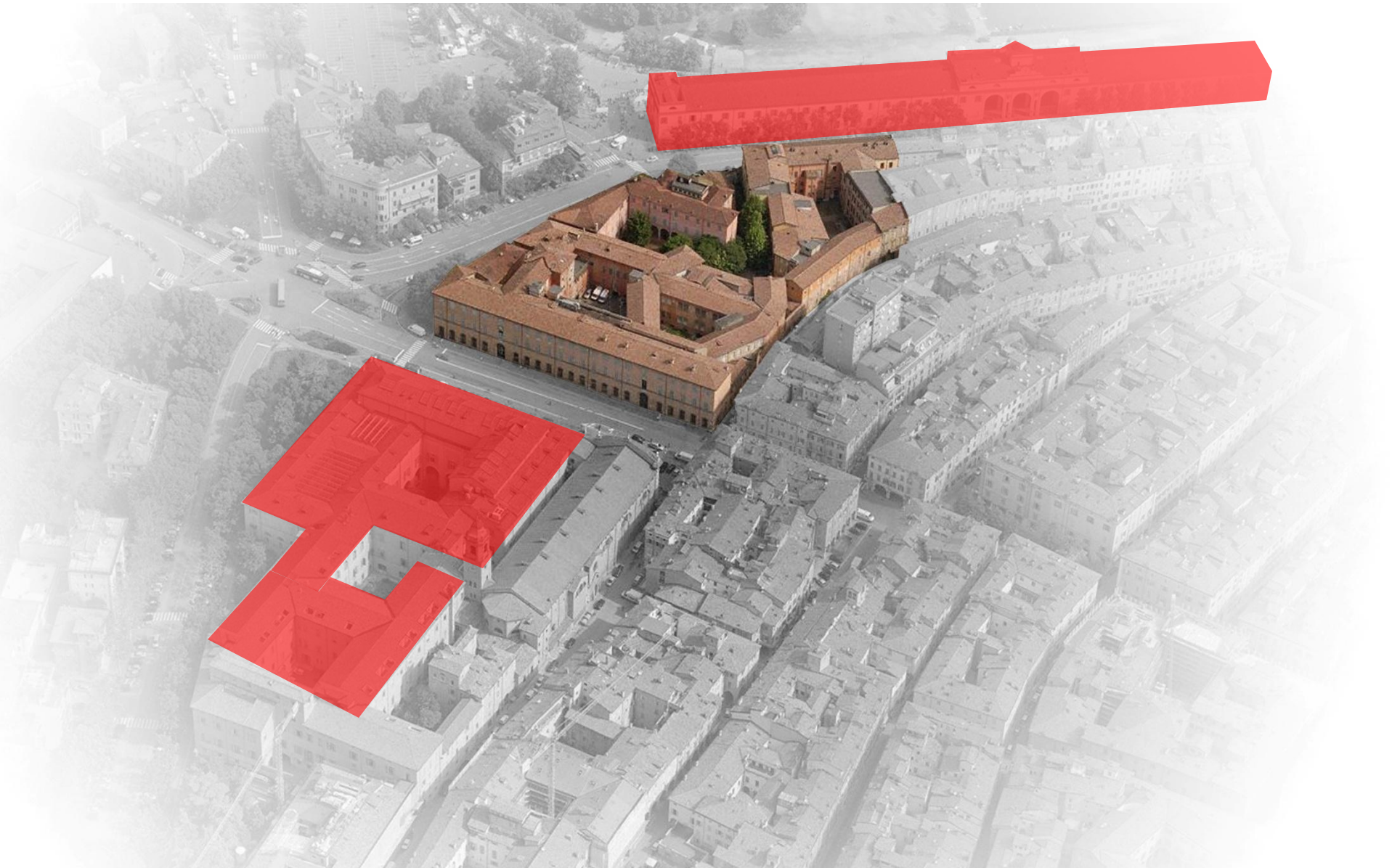
Palazzo Comunale

Teatro Storchi

Facoltà di Giurisprudenza
Complesso San Geminiano

Biblioteca della Facoltà di Giurisprudenza
Complesso San Paolo





HISTORY

An aerial photograph of a large, historic brick building complex in a city. The building is a large, multi-story structure with a complex, irregular shape, featuring a central courtyard. It is surrounded by other buildings and streets. The image is in grayscale, with the building's brickwork highlighted in a reddish-brown color.

- 1753** Founded by the Duke Francesco III d'Este
- '800** Additions and enlargements
- '900** Used as a modern hospital of the city
- 2004** The hospital closed
- 2005 – 2008** Acquired by the Fondazione Cassa di Risparmio di Modena



FONDAZIONE

Cassa di Risparmio di Modena

2012

2007



UNIVERSITÀ DEGLI STUDI
DI MODENA E REGGIO EMILIA




MINISTERO
PER I BENI E
LE ATTIVITÀ
CULTURALI



COMUNE DI MODENA

the BIBLIOTECA ESTENSE

- 700.000 vols
- 11.000 manuscripts
- 160.000 autografi e fogli sciolti
- 18.000 printed works of XV and XVI C.
- 8.500 serials (600 current per.)
- 40.000 MF 6.500 microfilms
- 5.500 old phot. mat.
- 3.500 AV +
- 2.000 e+editions
- Archives Legacies and Artworks



dei fieri his qui credunt in nomine
eius. Qui non ex sanguine, neque
voluntate carnis, neque voluntate
virilis exerceat, sed ex
in seum est habitum in nobis.



sciens in q' operantem agricolam de fili
bus suis oportet parvum edere titulu
mus publicam curiositatem ne no tam
demonstrasse volentibus deum videtur.
q's fastidientibus prodesse potuisse.



Doni quidem
multa conan st
ordinate narra
tionem. que i
nobis optere i

sunt rerum, sicut tradiderunt nobis q.

the Biblioteca POLETTI



the Biblioteca POLETTI

- 120.000 vols :
 - Monographies and 300 Specialized Periodicals
 - 16000 vols from '500 to '800
 - 4.000 engravings
 - 4.000 drawings
 - 1.000 maps
- **SPECIAL COLLECTION**
- Artist Books, Donations, Arch. Archives



PROJECT COMPETITION



- 2009** Start in July with a public notice
- October** - Selection of 15 group on 59 requests of participation
- 2010** May - Selection of the finalist
- June** - Presentation of the winning idea to the city
- July** Exhibition of the 15 design sketches
- 2010** October - Preliminary Project Design completed
- 2011** December - Construction Project Design completed
- 2012** Approval phase and Working Drawing Redaction

THE TEAM

- **Gae AULENTI Architetti Associati, Milano**
- **CONSORZIO LEONARDO, Modena**
- **Studio Doglioni e Daminato, Belluno**
- **Library consultants – prof. Giovanni Solimine, dr. Alessandro Bertoni**

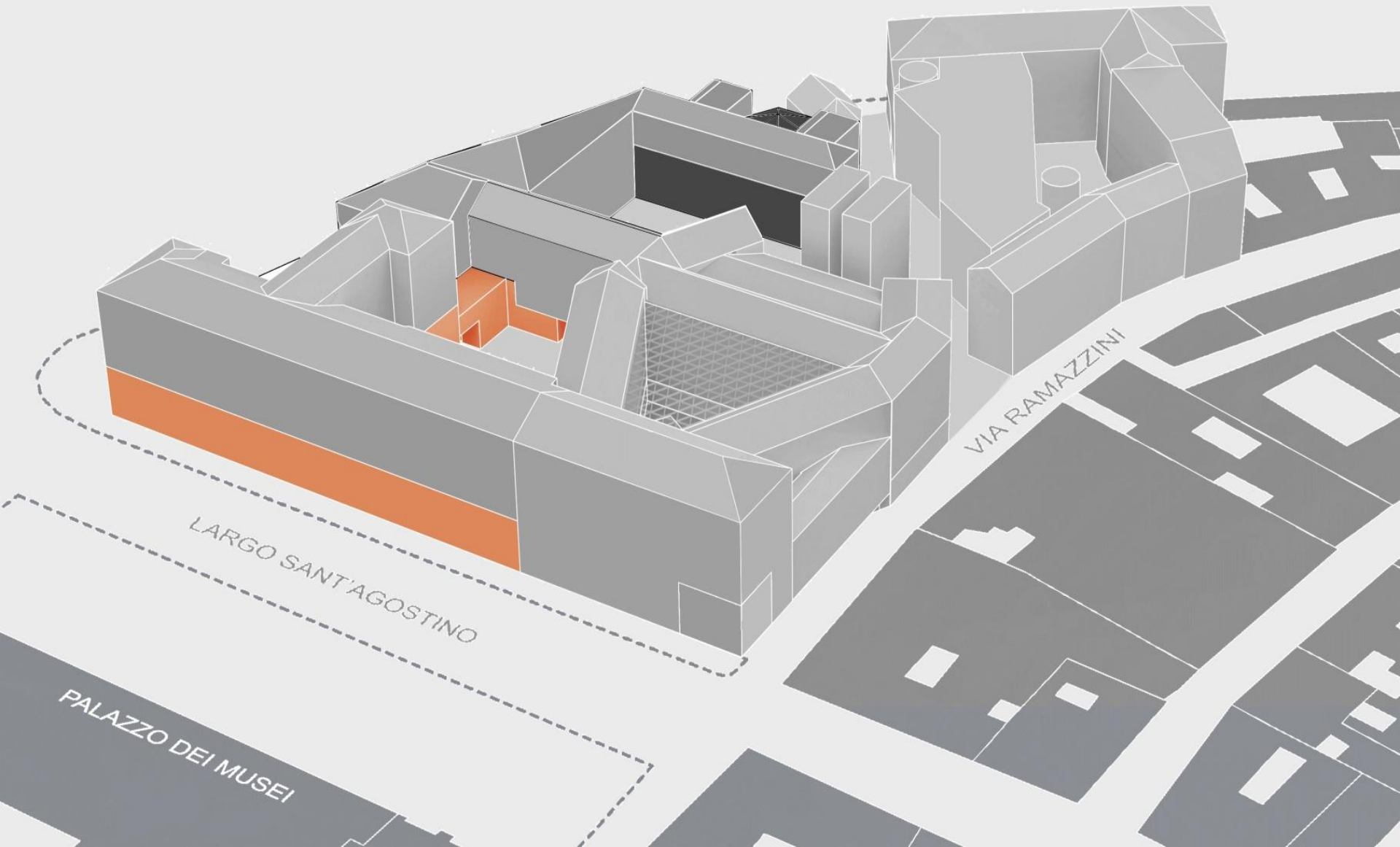
interview with
GAE AULENTI
as on the web

<http://santagostino.modena.it/sago/>

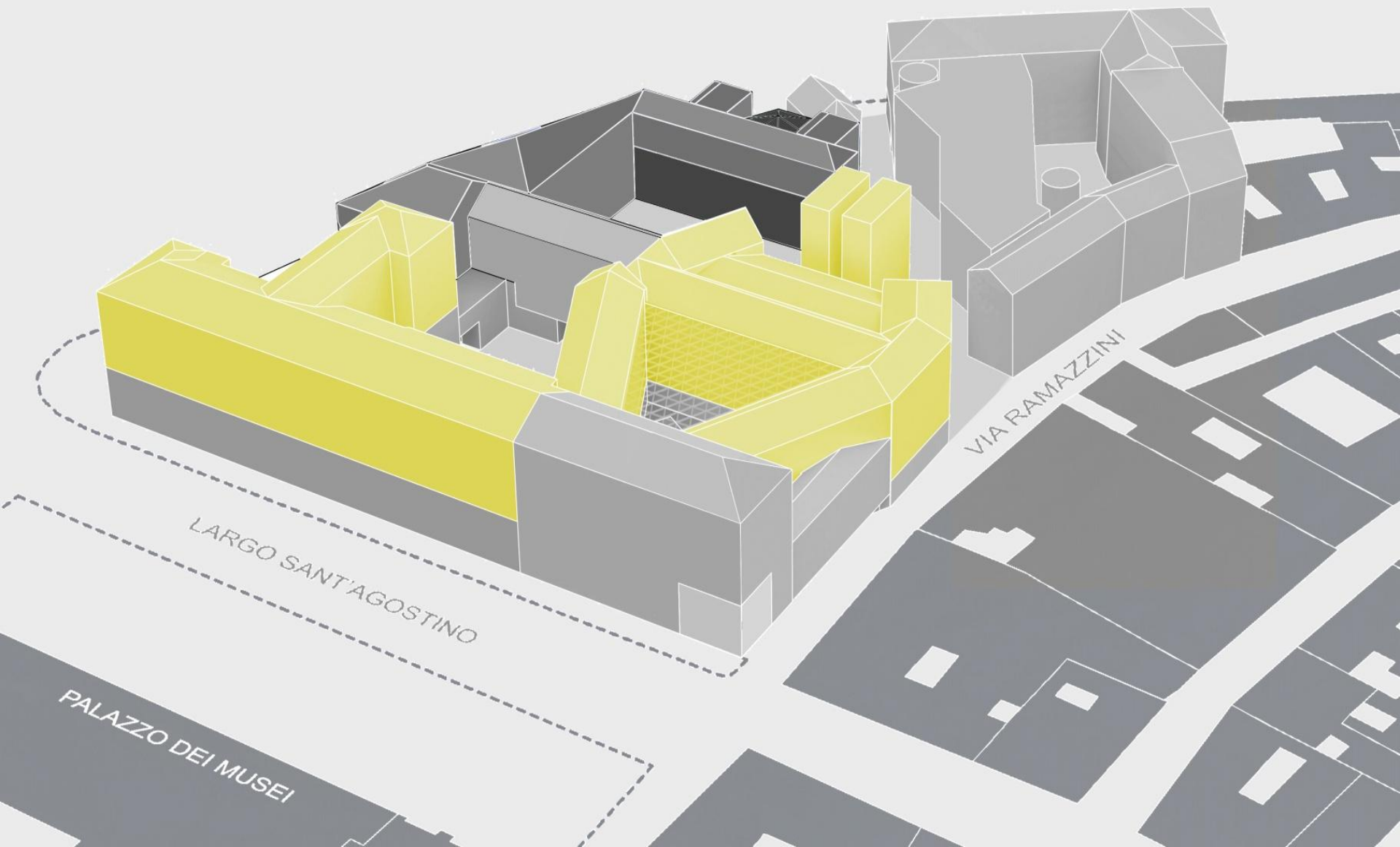
REUSING EXISTING BUILDINGS



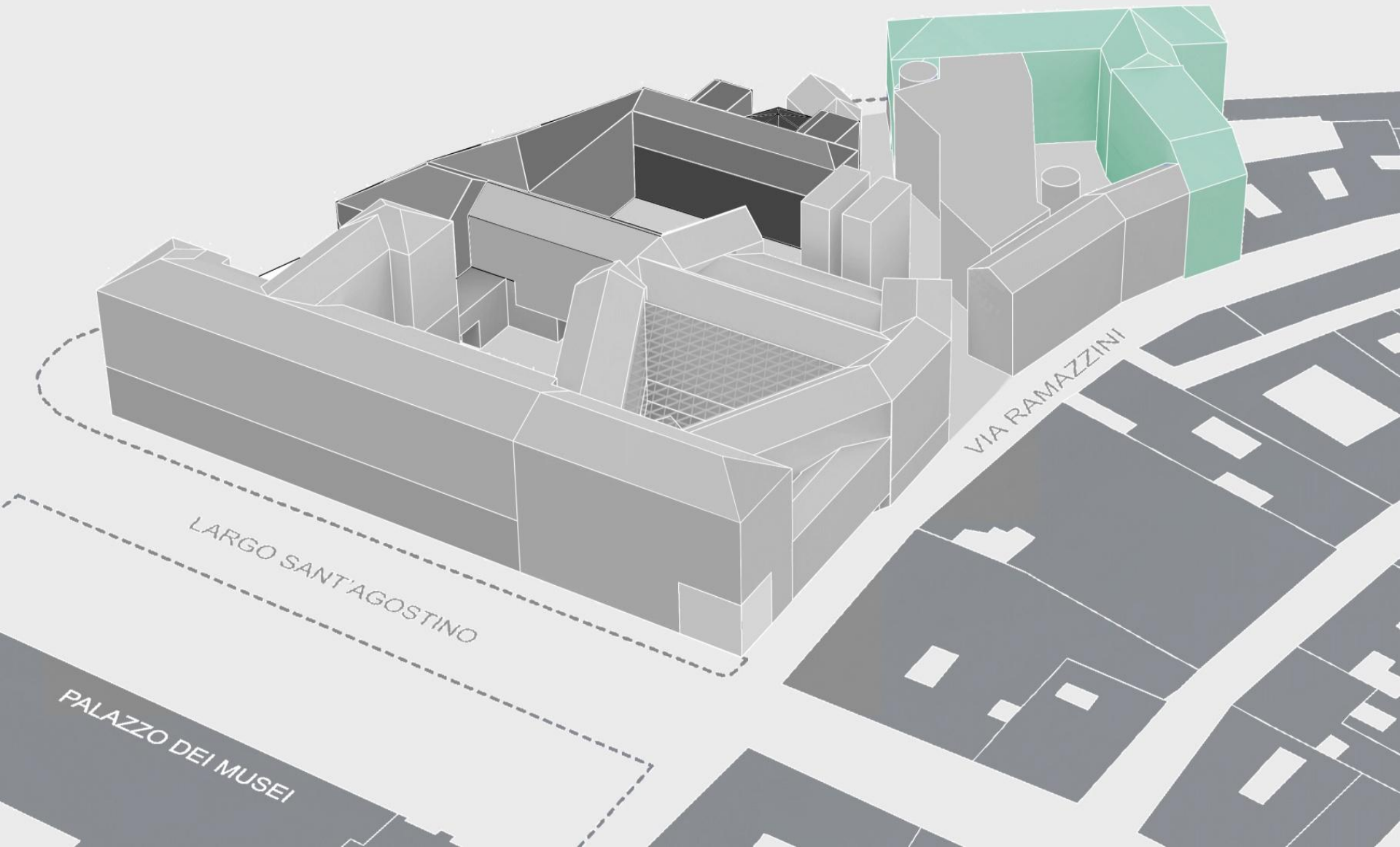
EXHIBITIONS : 1200 sq m



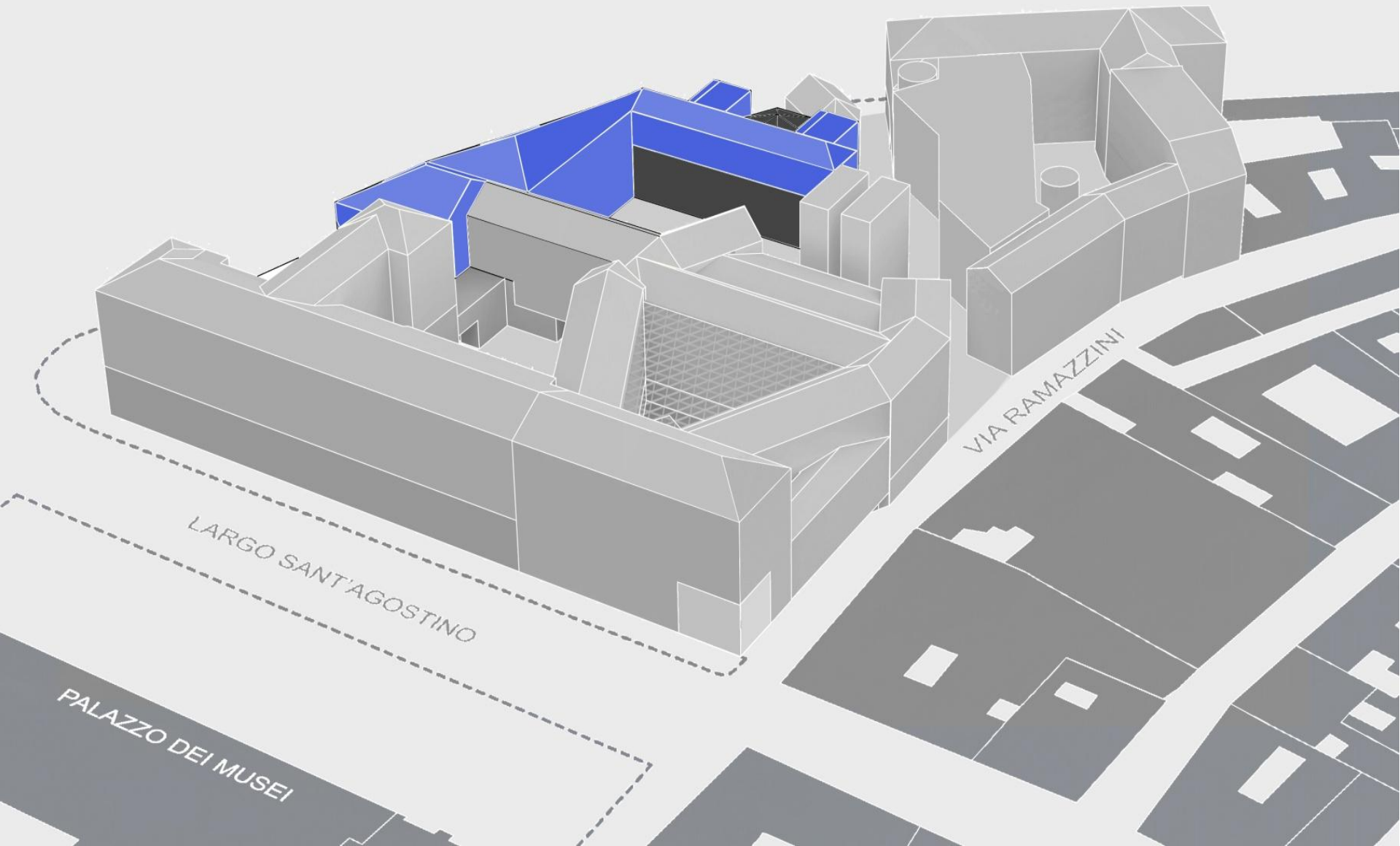
LIBRARIES : 8000 sq m



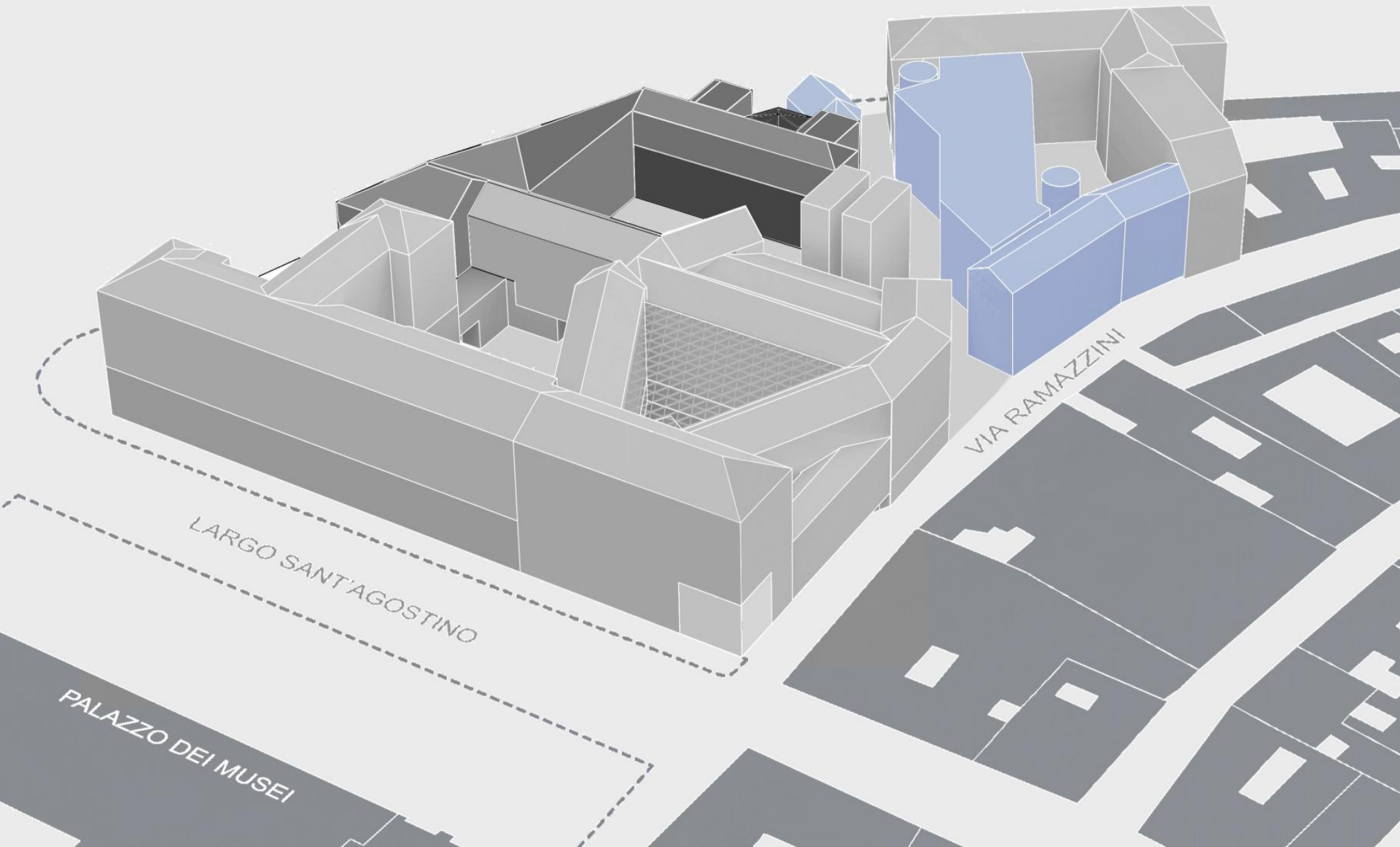
CENTRE for FOTHOGRAPHY & IMAGES : 2000 sq m



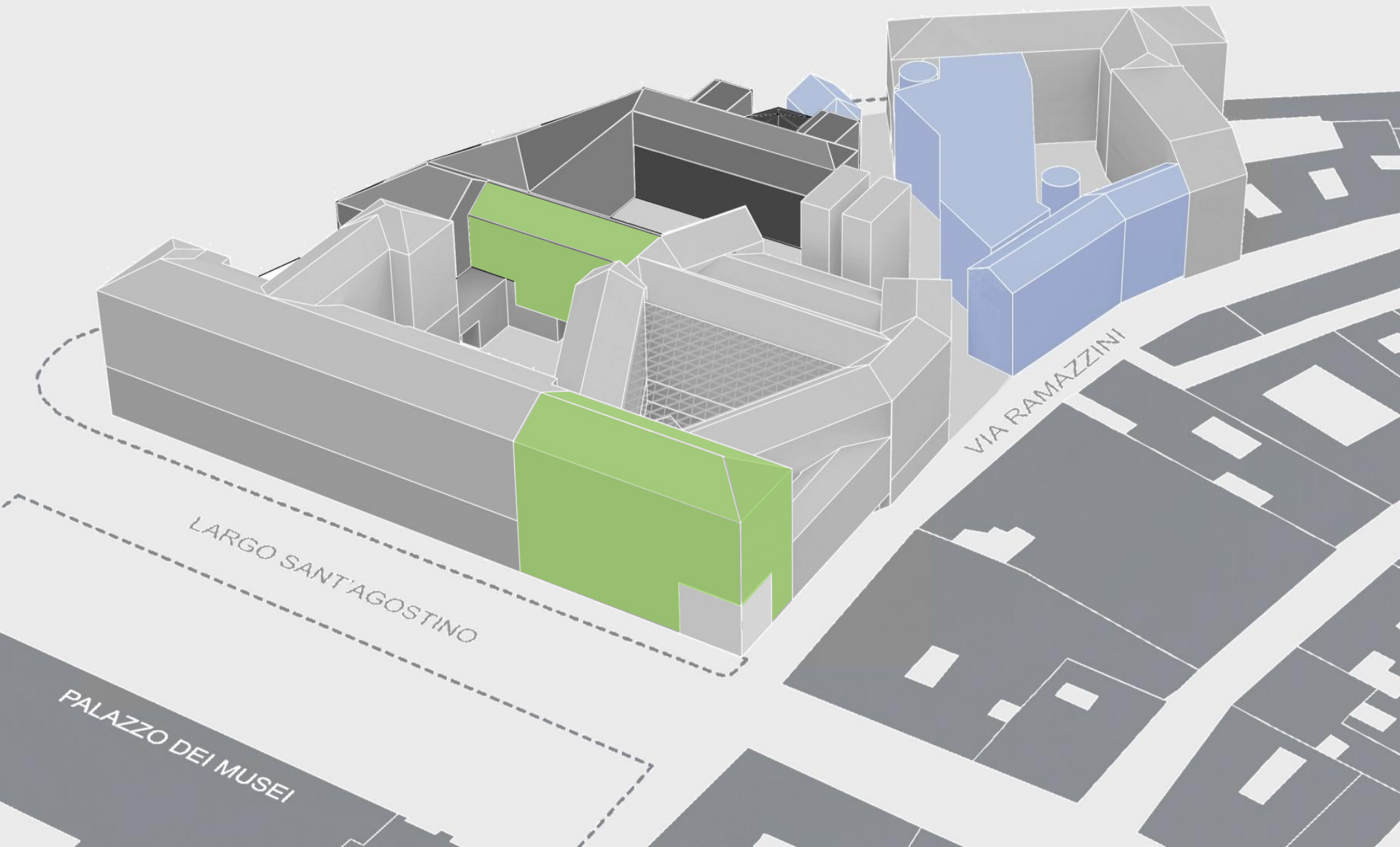
UNIVERSITY CENTRE for LANGUAGES & INTERNATIONALIZATION : 2600 sq m










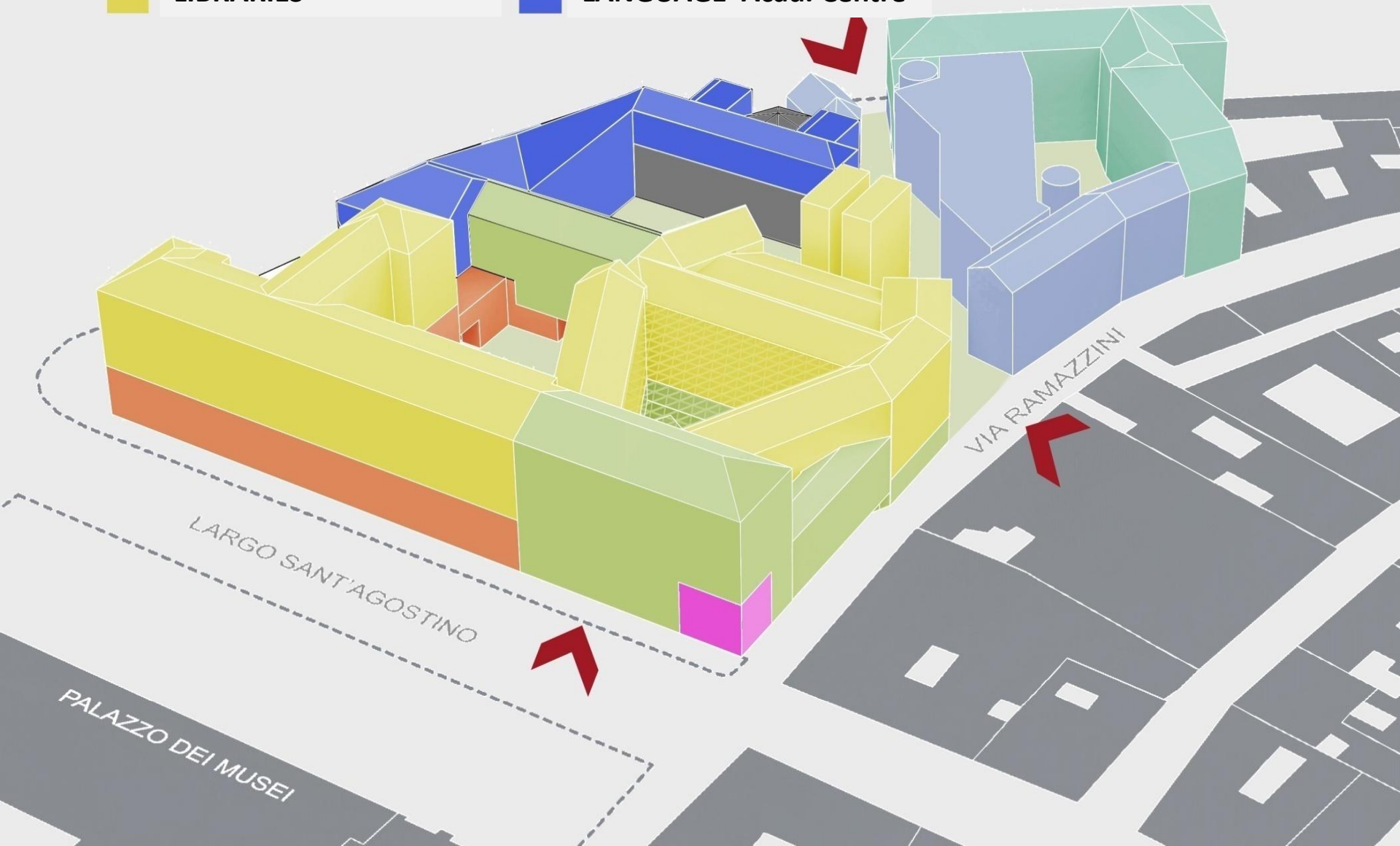
COMMERCIAL ACTIVITIES & GUEST QUARTERS : 3700 sq m



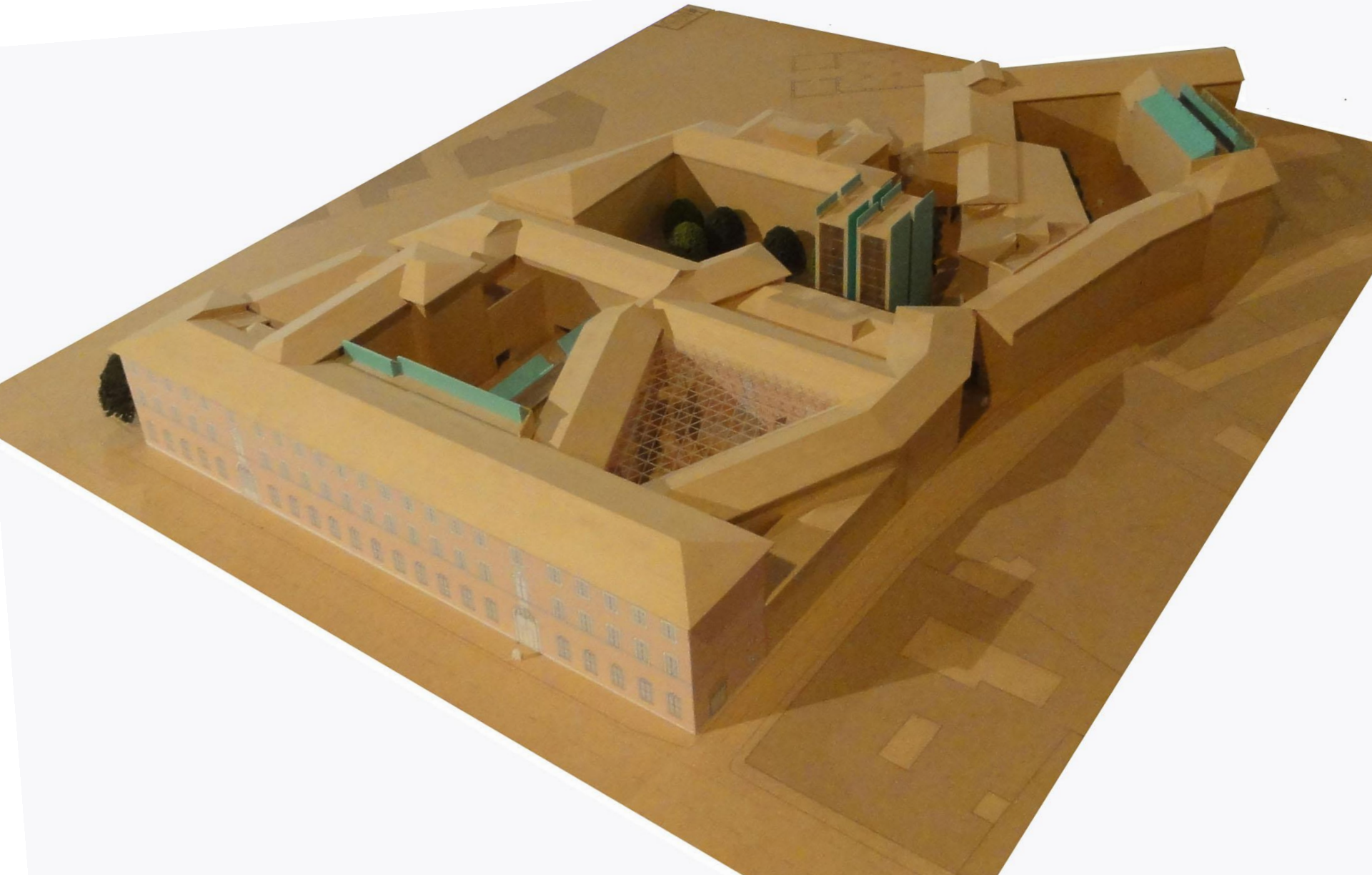
COMMON SPACES : Atrium – Auditorium – Foyer etc. : 2500 sq m



- | | | | | | |
|-----------------------------------------------------------------------------------|----------------------|-----------------------------------------------------------------------------------|------------------------------|------------------------------------------------------------------------------------|---------------------------------------------------|
|  | COMMON SPACES |  | PHOTOGRAPHY Centre |  | COMMERCIAL ACTIVITIES & GUEST QUARTERS |
|  | EXHIBITIONS |  | OLD PHARMACY | | |
|  | LIBRARIES |  | LANGUAGE Acad. Centre | | |



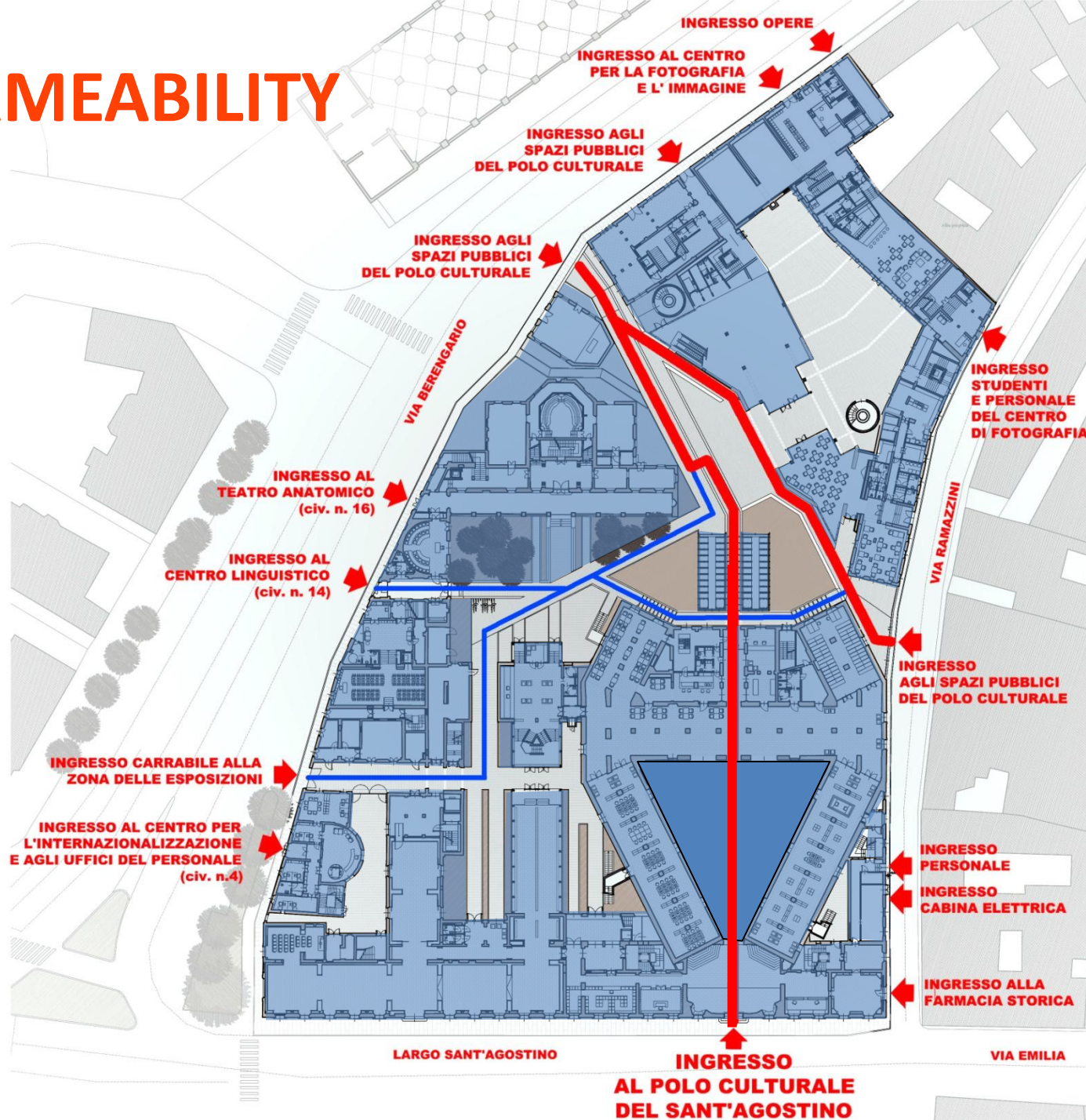
NEW BUILDING UNITS



NEW BUILDING UNITS

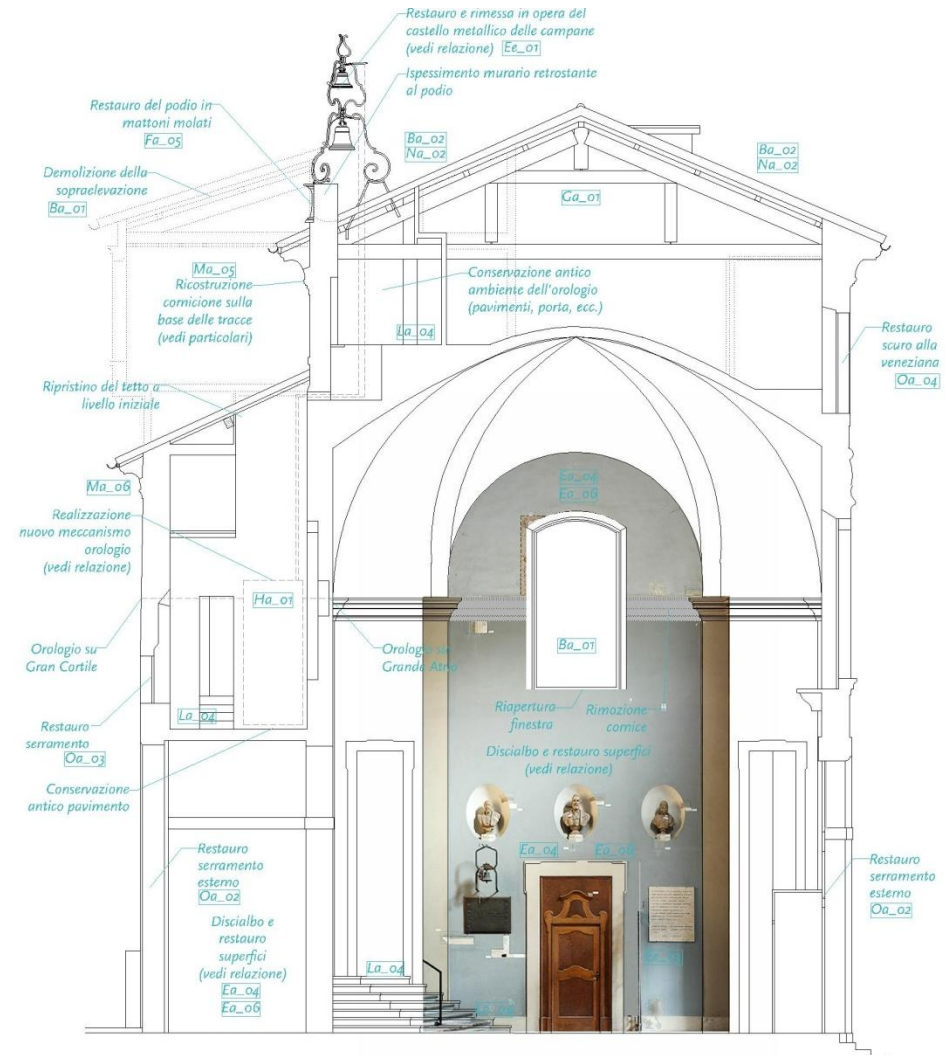
- THE GRAN CORTILE
- TWO BOOK TOWERS
- REBUILDED UNIT
- THE SECOND COURT

PERMEABILITY



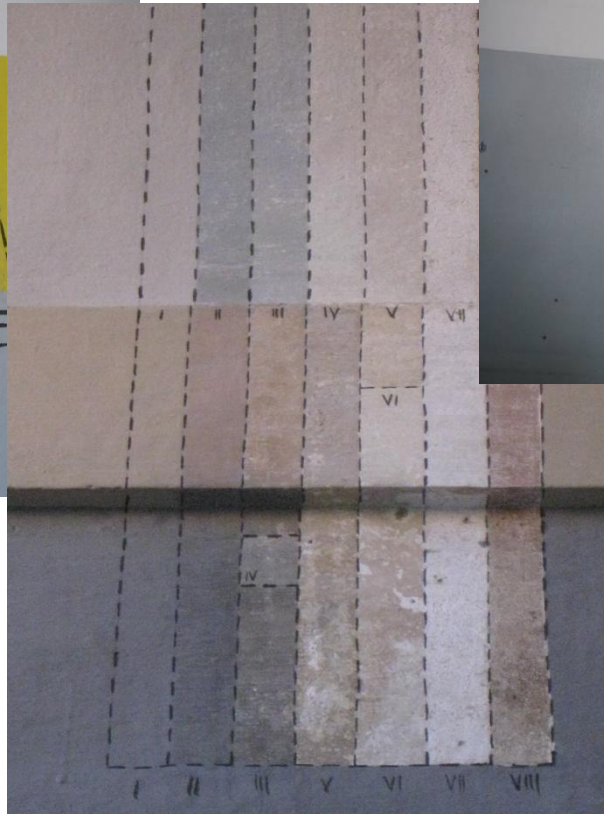
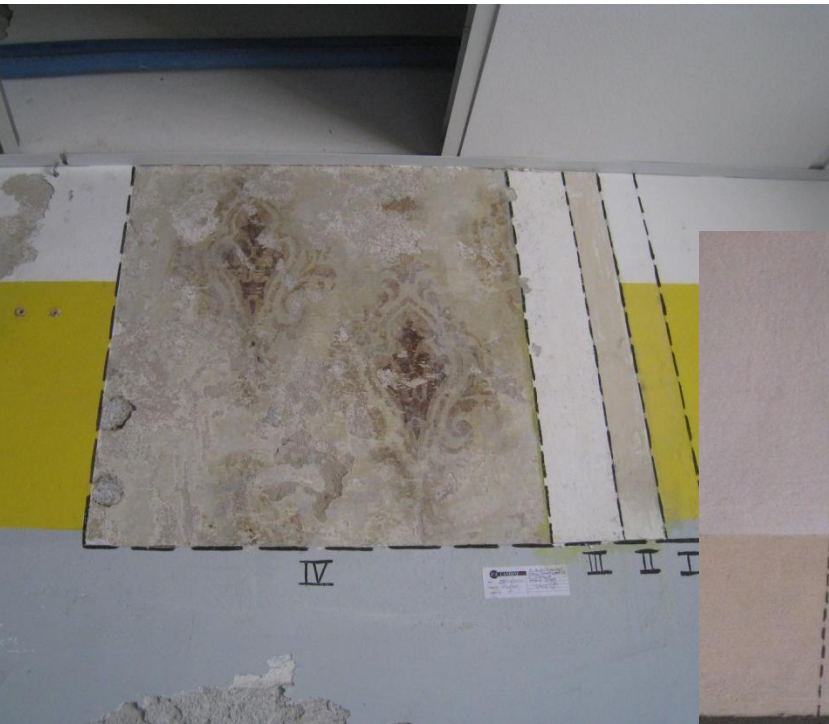
RESTORING

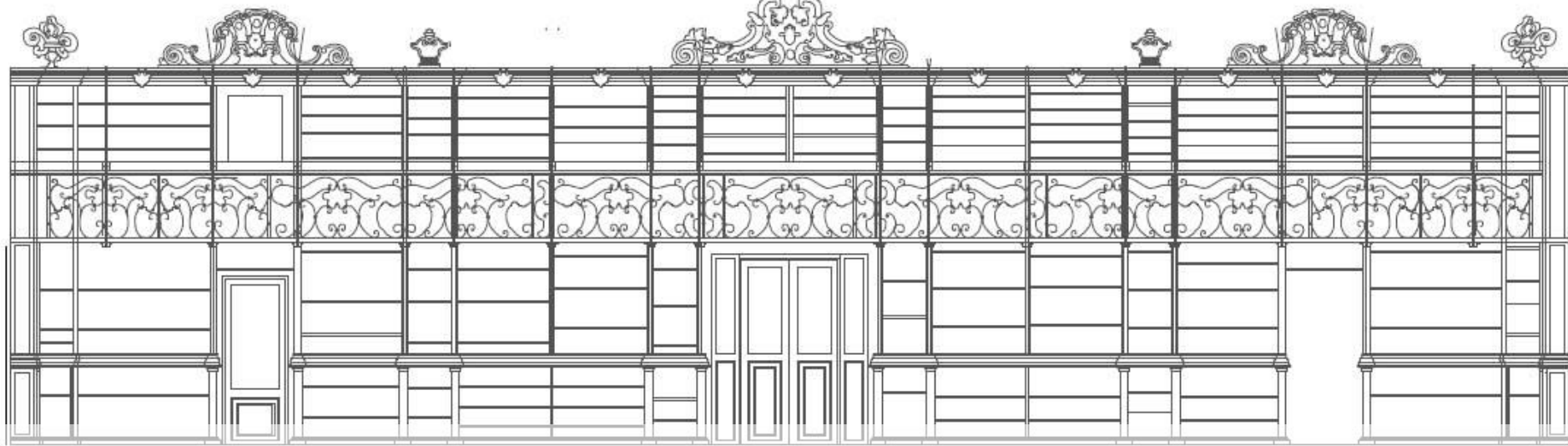
e.g.



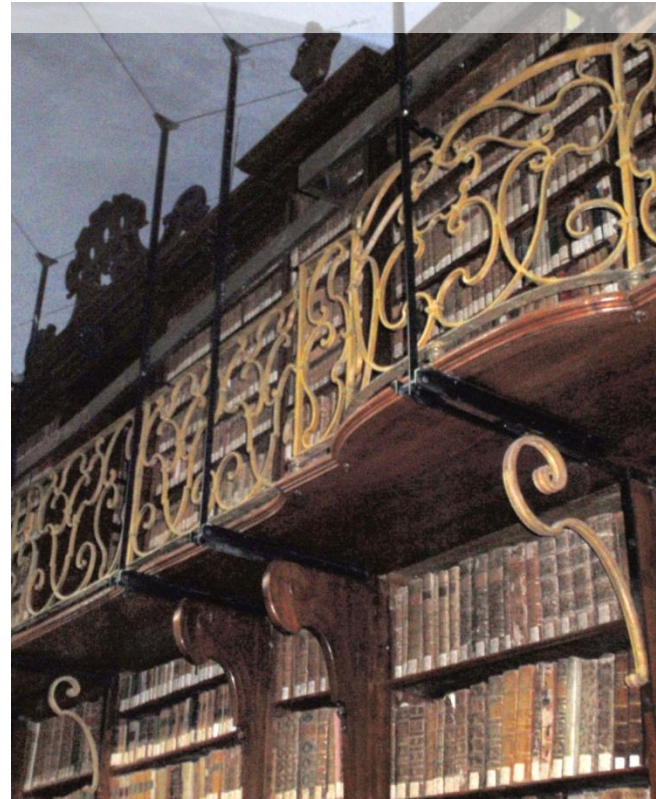
RESTORING

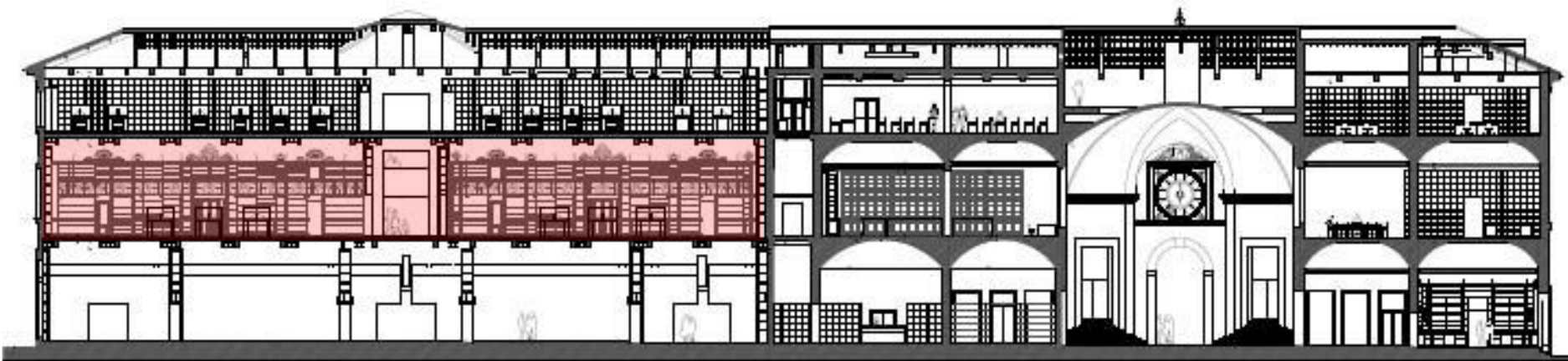
e.g.

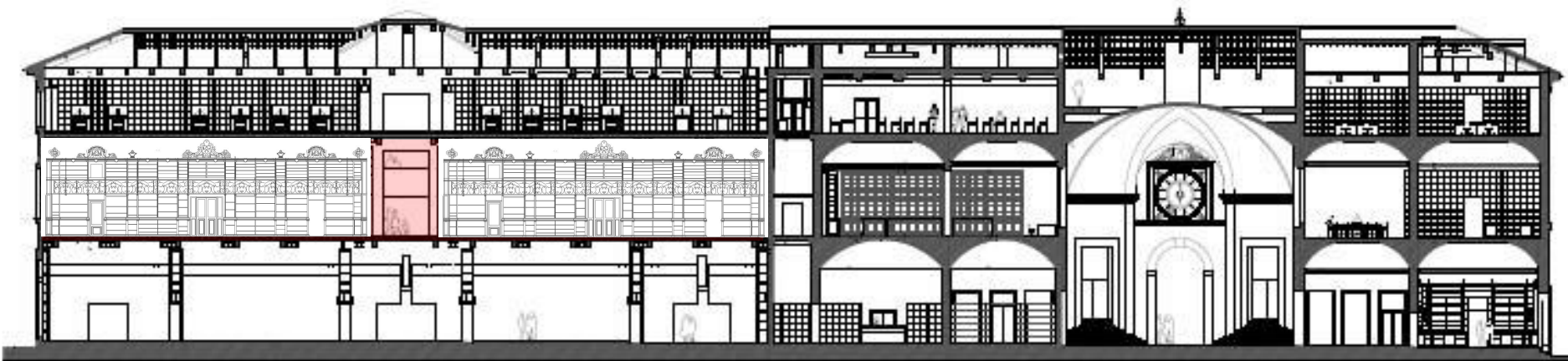


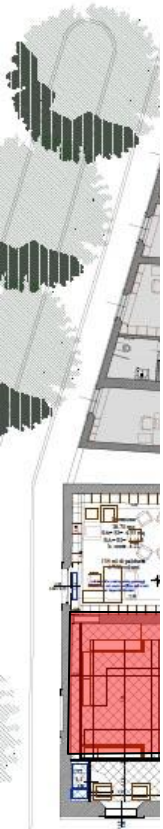
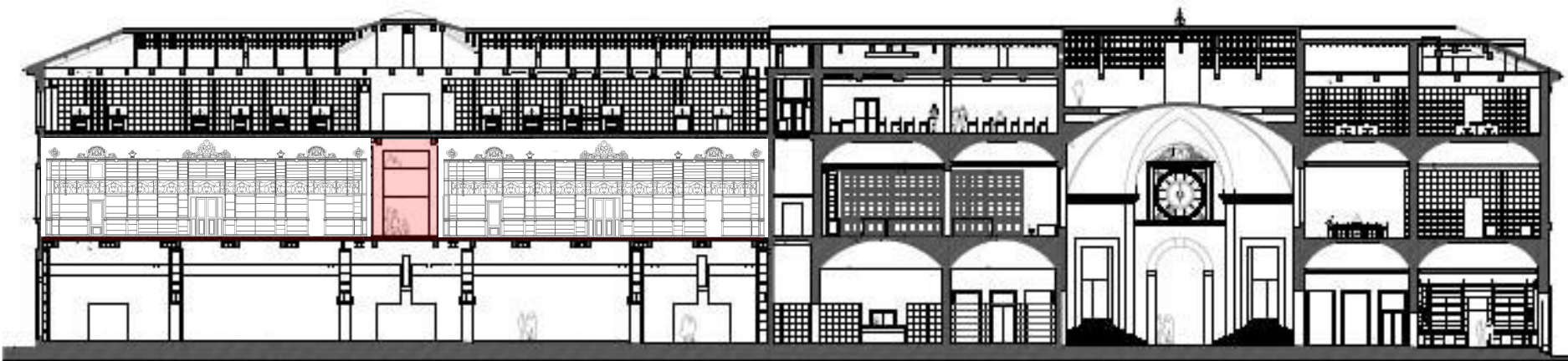


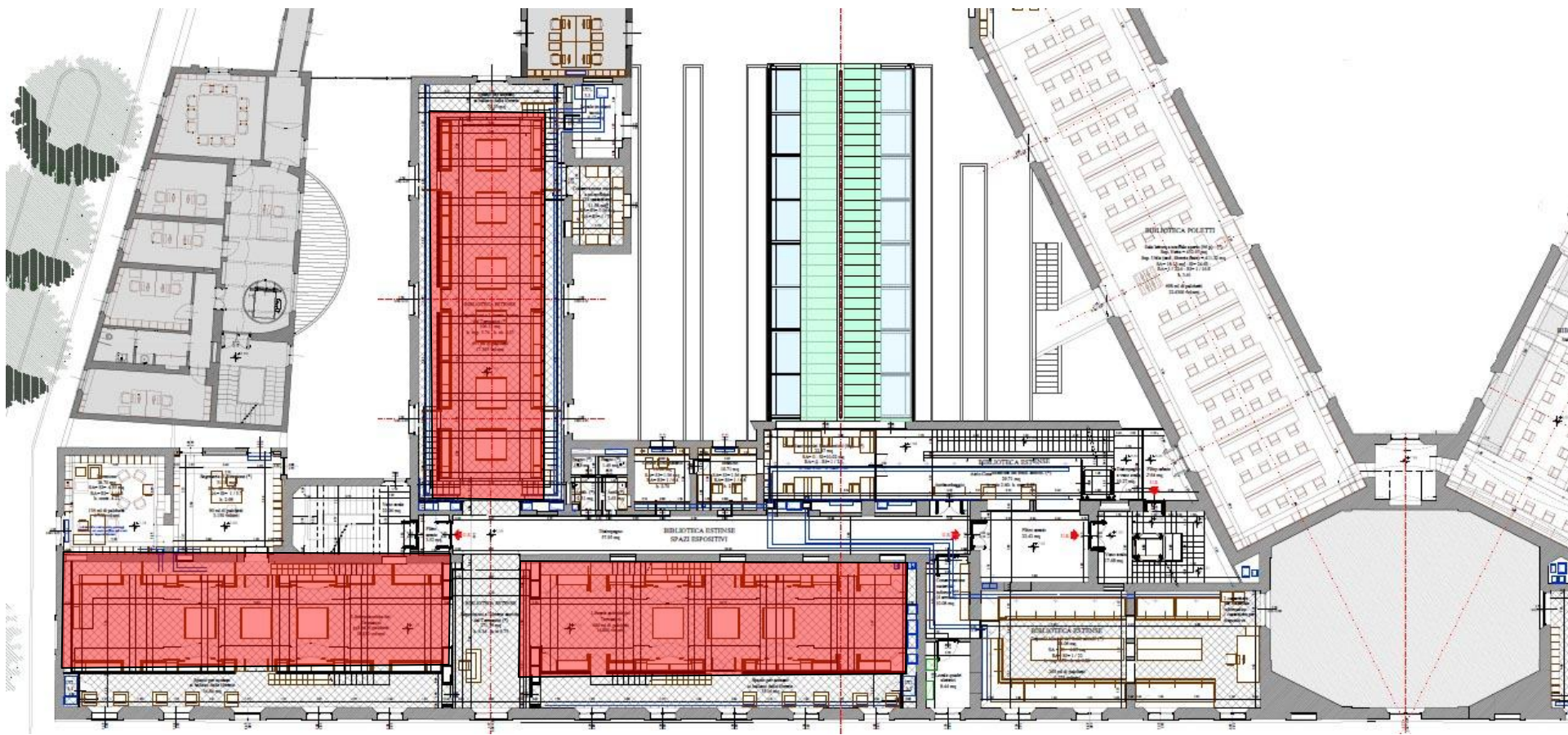
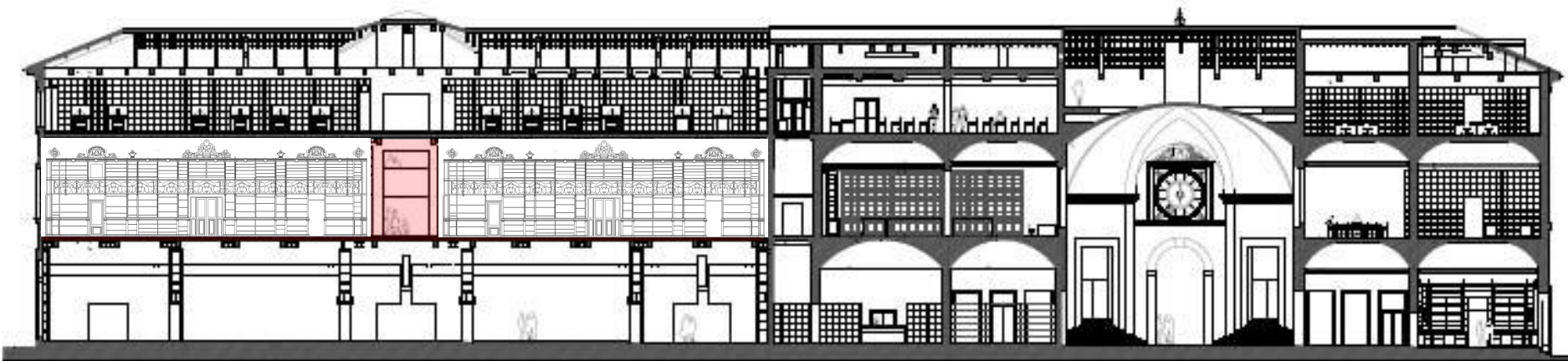
REUSING OLD SHELVES









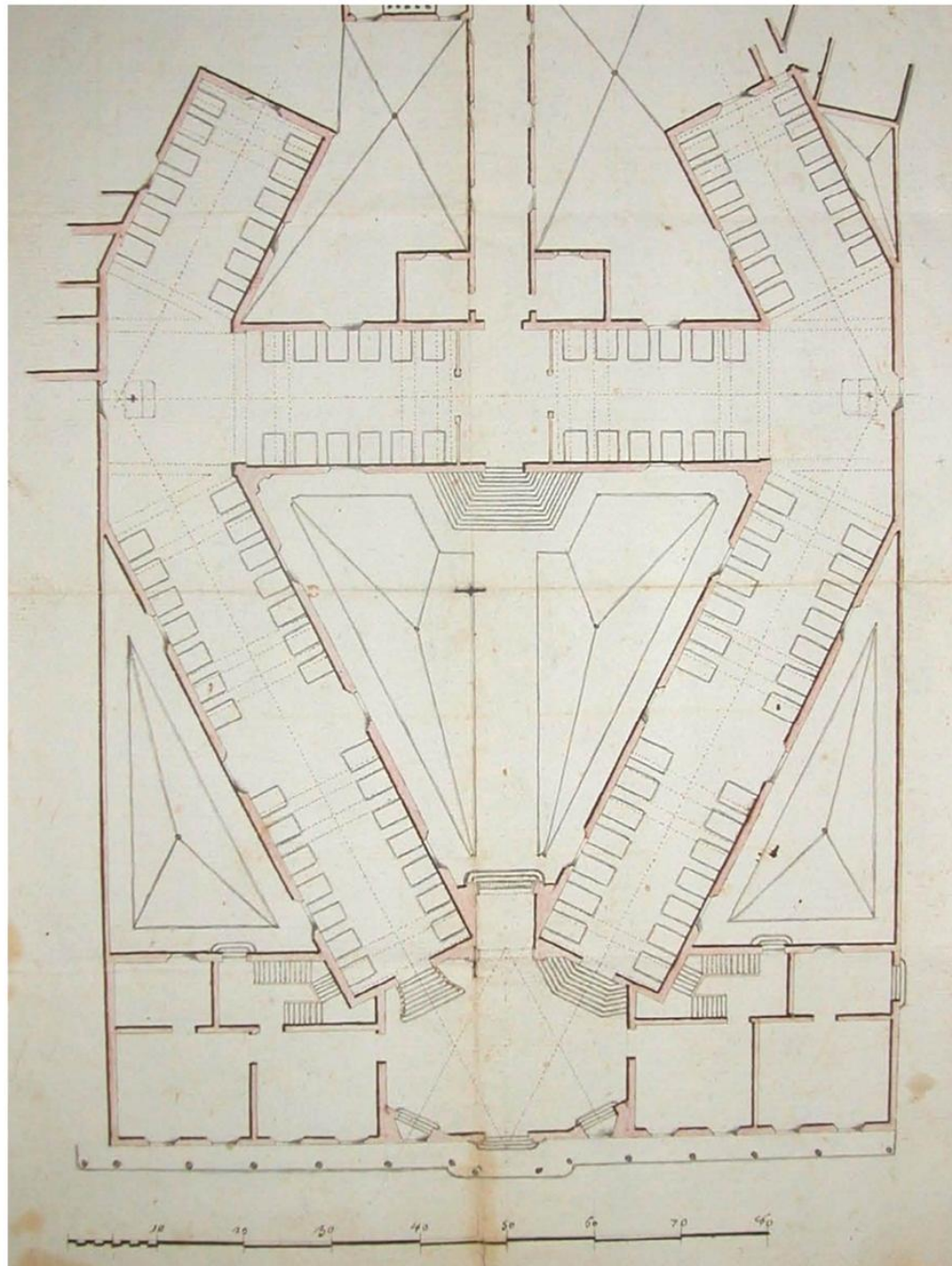




REUSING (reinventing) OLD SPACES







**First
HOSPITAL
BUILDING**

**Started
In 1753**

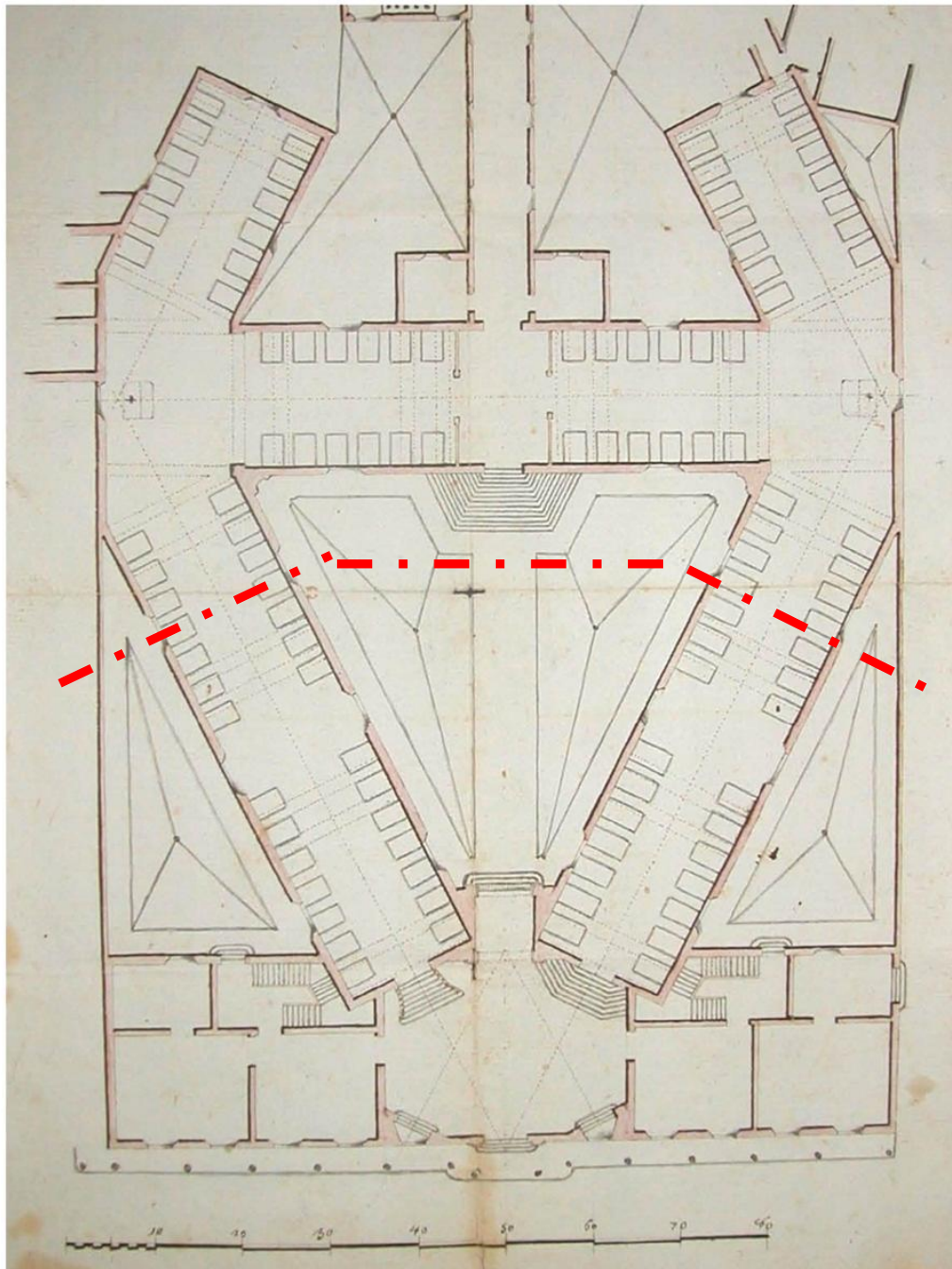
**Map of the
end of the
XVIII Century**

**First
HOSPITAL
BUILDING**

**Started
In 1753**



**Map of the
end of the
XVIII Century**

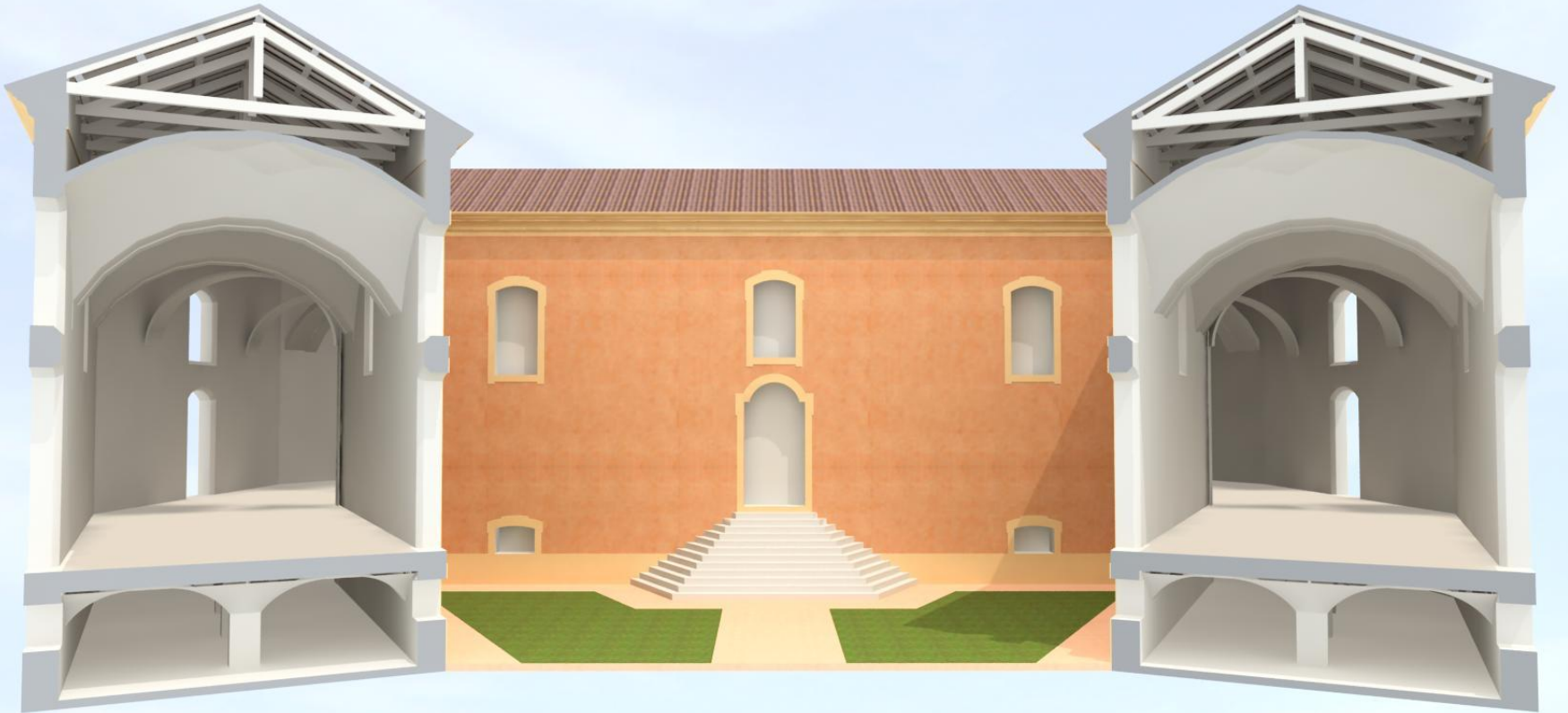


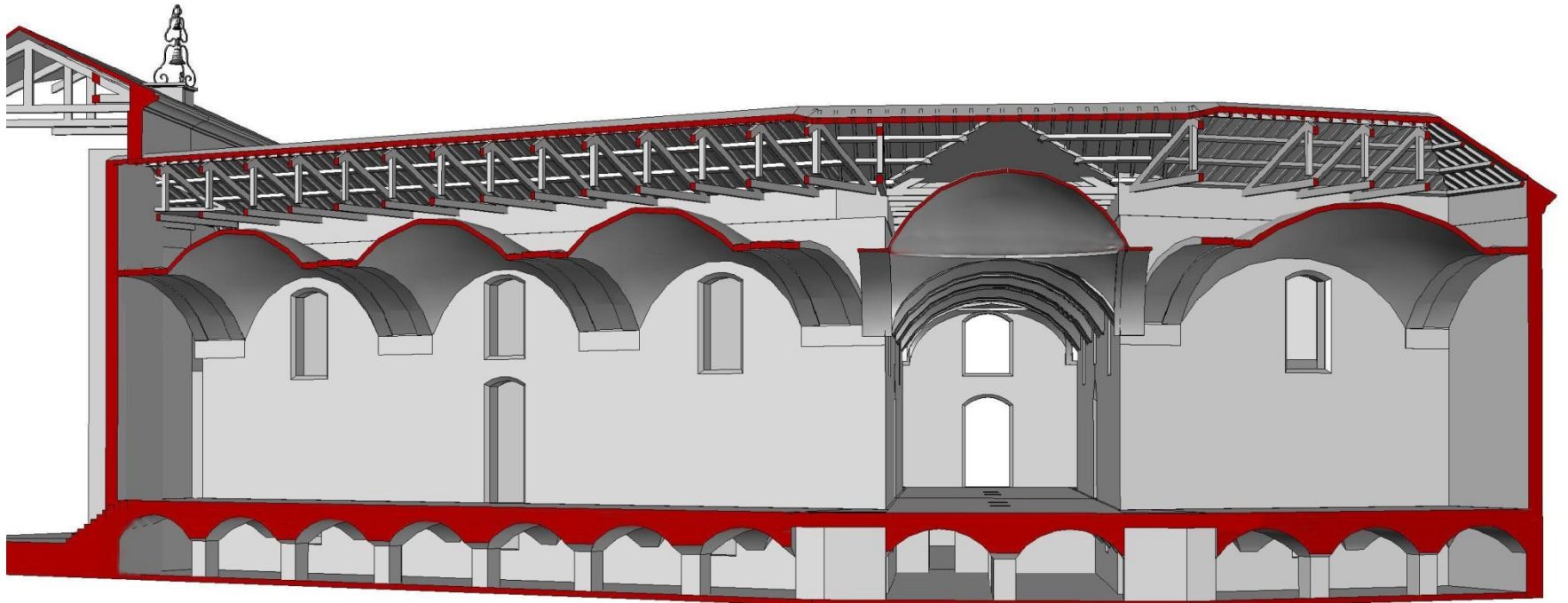
**First
HOSPITAL
BUILDING**

**Started
In 1753**

**Map of the
end of the
XVIII Century**

“GRAN CORTILE”







Bookshelves on the left side of the image.

Windows on the left side of the image.

Long study tables and chairs in the middle of the image.

Arched openings in the distance.

Recessed ceiling lights.

Concrete ceiling beams.

Bookshelves on the right side of the image.

Books on the shelves.

Books on the shelves.

Books on the shelves.

Books on the shelves.

Books on the shelves.

Books on the shelves.

Concrete wall on the left side of the image.

Concrete floor on the left side of the image.

Concrete ceiling beams on the left side of the image.

Bookshelves on the right side of the image.

Books on the shelves.

Books on the shelves.

Books on the shelves.

Books on the shelves.

Books on the shelves.

Books on the shelves.

Books on the shelves.

Recessed ceiling lights on the left side of the image.

Recessed ceiling lights on the left side of the image.

Recessed ceiling lights on the left side of the image.

Recessed ceiling lights on the left side of the image.

Recessed ceiling lights on the left side of the image.

Recessed ceiling lights on the left side of the image.

Recessed ceiling lights on the left side of the image.

Recessed ceiling lights on the left side of the image.

Recessed ceiling lights on the left side of the image.

Recessed ceiling lights on the left side of the image.

Recessed ceiling lights on the left side of the image.

Recessed ceiling lights on the left side of the image.

Recessed ceiling lights on the left side of the image.

Recessed ceiling lights on the left side of the image.

Recessed ceiling lights on the left side of the image.

Recessed ceiling lights on the left side of the image.

OLD FUNCTIONS (C&P) and NEW FACILITIES





The TWO-LIBRARIES CENTRE

- More seats, more place
- Open Access also to special collections
- 800.000 vols stored in the authomated deposit
- RFID technology adopted
- Supplementary reading room outside the library
- Manuscript room and Rare room (controlled)
- Conference Room (inside) Auditorium (common)
- Spaces for learning activities
- ...

INNOVATION and SUSTAINABLE GROWTH

- Unique access to both the libraries
- Unified management of the SA complex
- Common facilities, services and
- Cooperation, convergence, synergy with others centres and institutions
- Integrated exhibitions (3 levels)
- In general + sustainability (energy savings and more economical management)

Ringraziamenti



Consorzio LEONARDO associato INGEGNERI RIUNITI

GAE AULENTI Architetti Associati

Studio Associato DOGLIONI e DAMINATO



Fondazione Cassa di Risparmio di Modena



finally... arrivederci a Modena



<http://santagostino.modena.it/sago/>

bertoni @ unive.it