

STRATEGIES FOR SPECIAL COLLECTIONS AT THE BODLEIAN

Richard Ovenden, Deputy Librarian

Bodleian Libraries

POSTERIS ET ÆTERNITATI
SACRVM.

THOMÆ BODLÆI QVICQVTD MORTALÆ
TABELLA,
INGENTEMQVE ANIMAM BIBLIOTHECA
REFERT.



HOSPES ROGATVS SISTE,
BODLÆVMQVE LOCI GENIVM ET MVSARVM
MECENATEM VLTRA CÆSARES AVGVSTVM
QVI BIBLIOTECAM MOLEMQVE HANC STVPENDAM
CONDIDIT, INTVERE.

HOC VOLTAM NESCIVS NE ESSES, VALE.

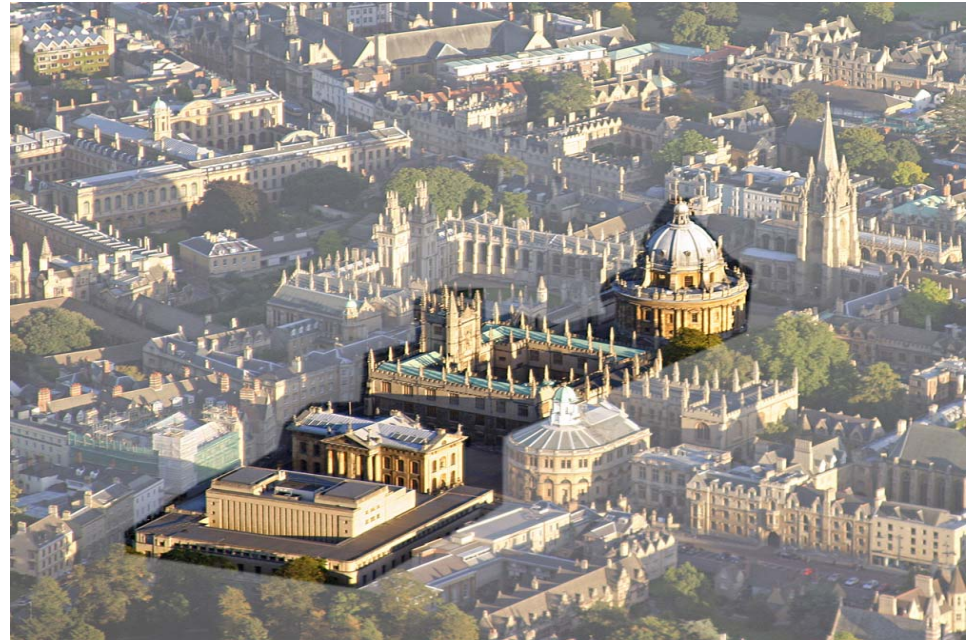


25
6
1
2
3
4
5
6
7
8
9
10
11
12
13
14
15
16
17
18
19
20
21
22
23
24
25
26
27
28
29
30
31
32
33
34
35
36
37
38
39
40
41
42
43
44
45
46
47
48
49
50
51
52
53
54
55
56
57
58
59
60
61
62
63
64
65
66
67
68
69
70
71
72
73
74
75
76
77
78
79
80
81
82
83
84
85
86
87
88
89
90
91
92
93
94
95
96
97
98
99
100

16
17
18
19
20
21
22
23
24
25
26
27
28
29
30
31
32
33
34
35
36
37
38
39
40
41
42
43
44
45
46
47
48
49
50
51
52
53
54
55
56
57
58
59
60
61
62
63
64
65
66
67
68
69
70
71
72
73
74
75
76
77
78
79
80
81
82
83
84
85
86
87
88
89
90
91
92
93
94
95
96
97
98
99
100

Bodleian Libraries

- Founded 1602 by Sir Thomas Bodley
- Main Library of the University
- 13m volumes, major international research collections
- 520 FTE staff
- 31 libraries in the Bodleian system
- Over 250k new books added per annum
- Budget c. £34m



Strategies

- Long-term issue over growth space for physical collections, and quality of storage for special collections.
- Urgent need to develop new research facilities for new kinds of scholarship.
- Urgent need to expand our ability to engage with the general public beyond the university.
- Academic Strategy in 2008 developed integrated estates plan
- Investment from University and private donors
- Need to stick to deadlines and budget!

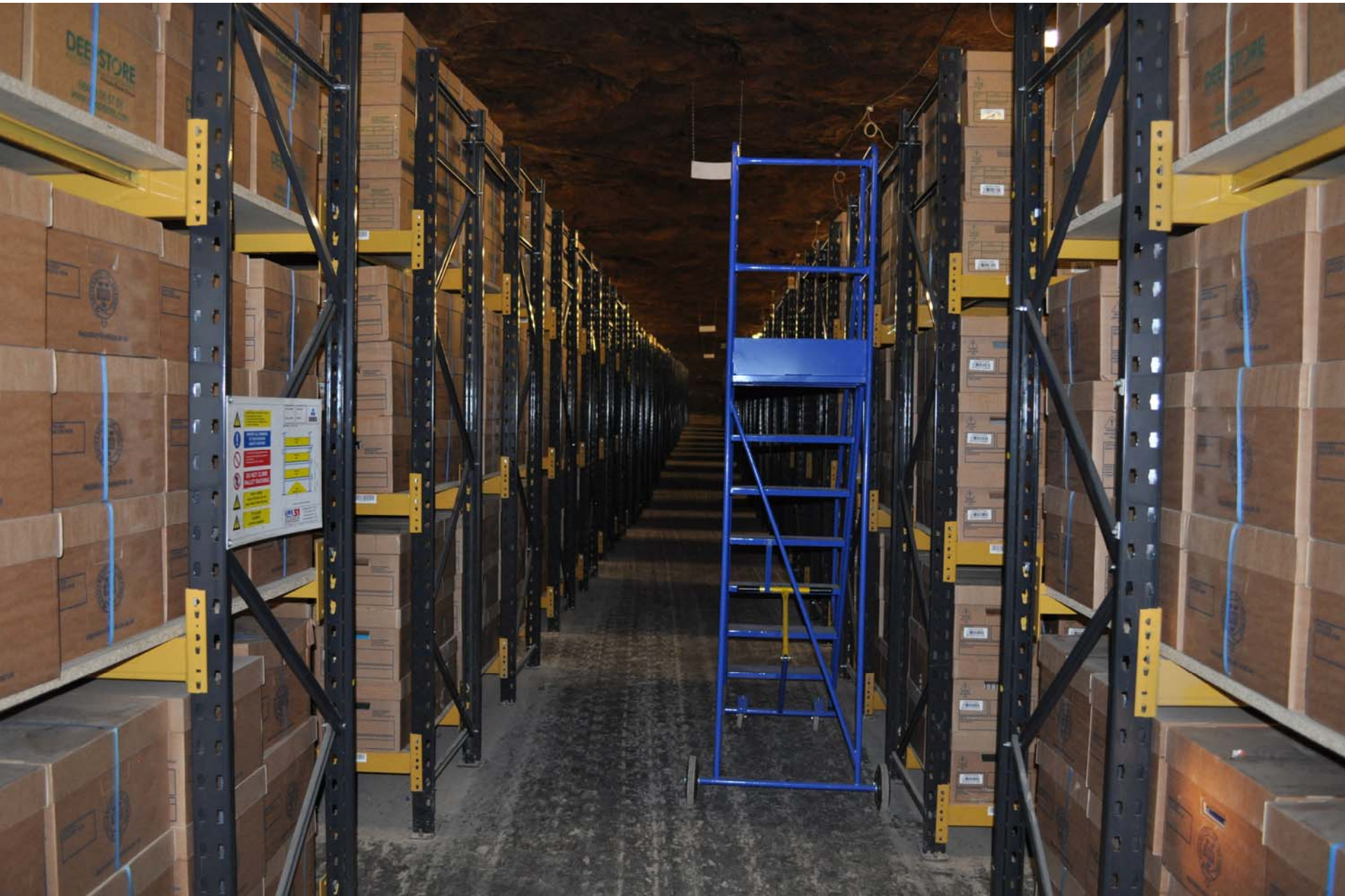
Strategies for special collections

- Move low-use material to new off-site storage, that has high-quality standards for preservation.
- Modify space in central Oxford for three purposes:
 - Highest quality conditions for preservation
 - New research facilities
 - New facilities for engaging the general public.

The Quest for Space

- Need for more space for collections:
 - 3-5k new volumes added per week
- Improve physical storage conditions (BS: 5454)
- Rationalise estate:
 - Integration of Faculty and Departmental libraries
- ‘Temporary’ storage in salt mines in Cheshire, by Dec 2010 over 2.4 million items (costly).
- Goal to bring all external storage under one roof
- Decant space for New Bodleian project (c. 4m vols)





Bodleian Book Storage Facility



Bodleian Book Storage Facility

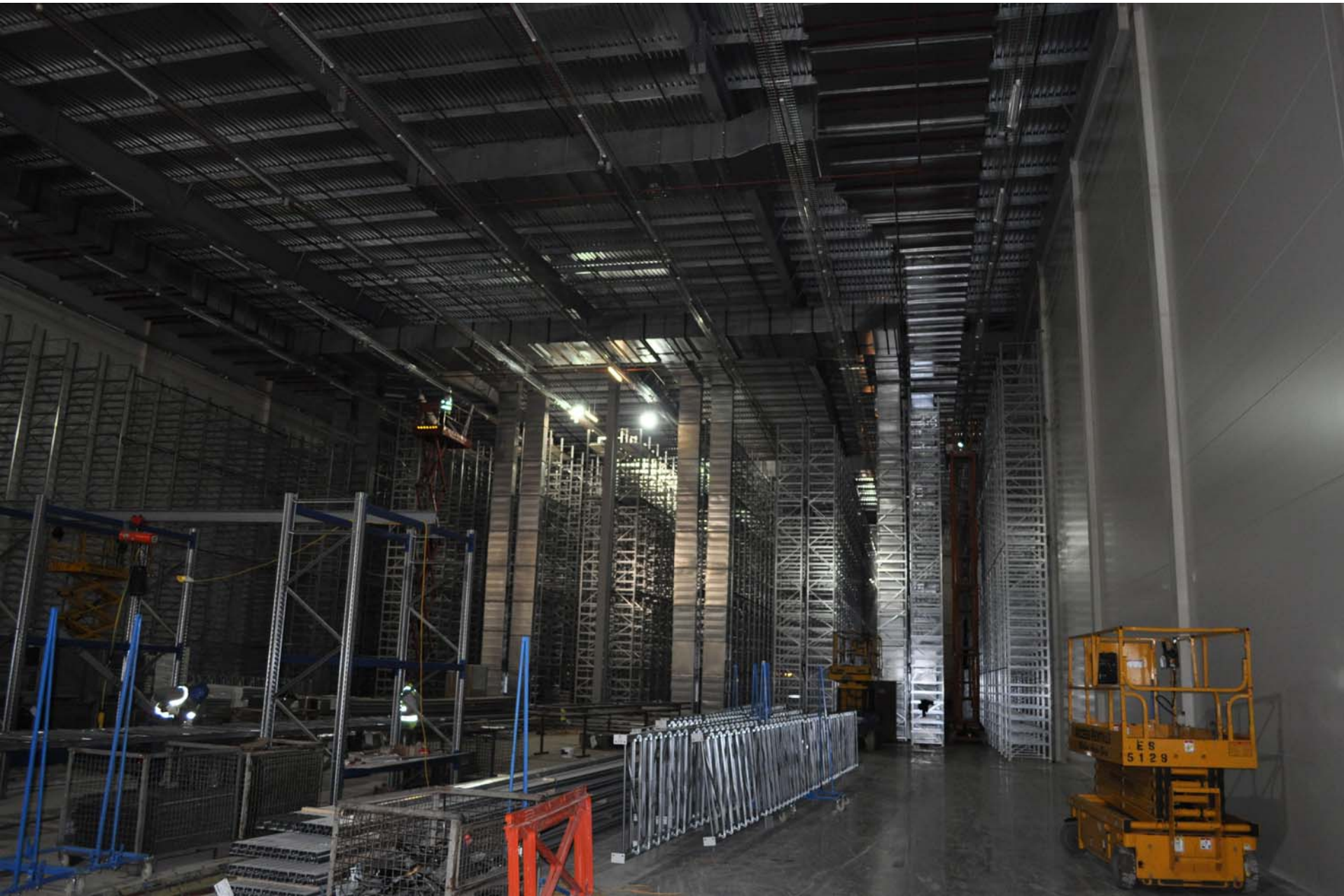
- 28 miles from Oxford
- Net area: 11,800 sq metres (footprint=1.6 football pitches)
- Four fire-rated compartments, with 31 aisles containing 3,224 bays with 95,000 shelf levels (surface area= 120.6k sq metres)
- Racking = 12 metres high
- Steelwork: 651 tonnes, 17k bolts

Bodleian Book Storage Facility

- Capacity = 247k linear metres (153.5 miles), or 8.5m volumes
- Plus 1.2m maps in 600 map chests
- Build project began in April 2009, completed 4 September 2010.
- Over 40 staff trained for the Ingest process
- Began Ingest on 1 November 2010
- Currently have 7, 200,000 volumes in the BSF















28/05/2012







Inventory Control (Barcoding)

- Essential for operation of the BSF
- Begun March 2010
- Over 7 million items barcoded to date
- Barcoded average 11k per day (circa 400m per day).
- Over 43,000 items have been catalogued that were not previously catalogued.
- 2,500 missing books have been found





7523678612

PRIMARY SERIES

HUMAN GEOGRAPHIES
FAIRGRIEVE & YOUNG

HOM



7509452492

RE 117 ALBUM

WIG, HAIRDRESSING
AND SHAVING BYGONES
GAIL DURBIN



750661084

SEA

An introduction to
H.A.R. Ed

13s 6d

BB00023832



Customer



Collection

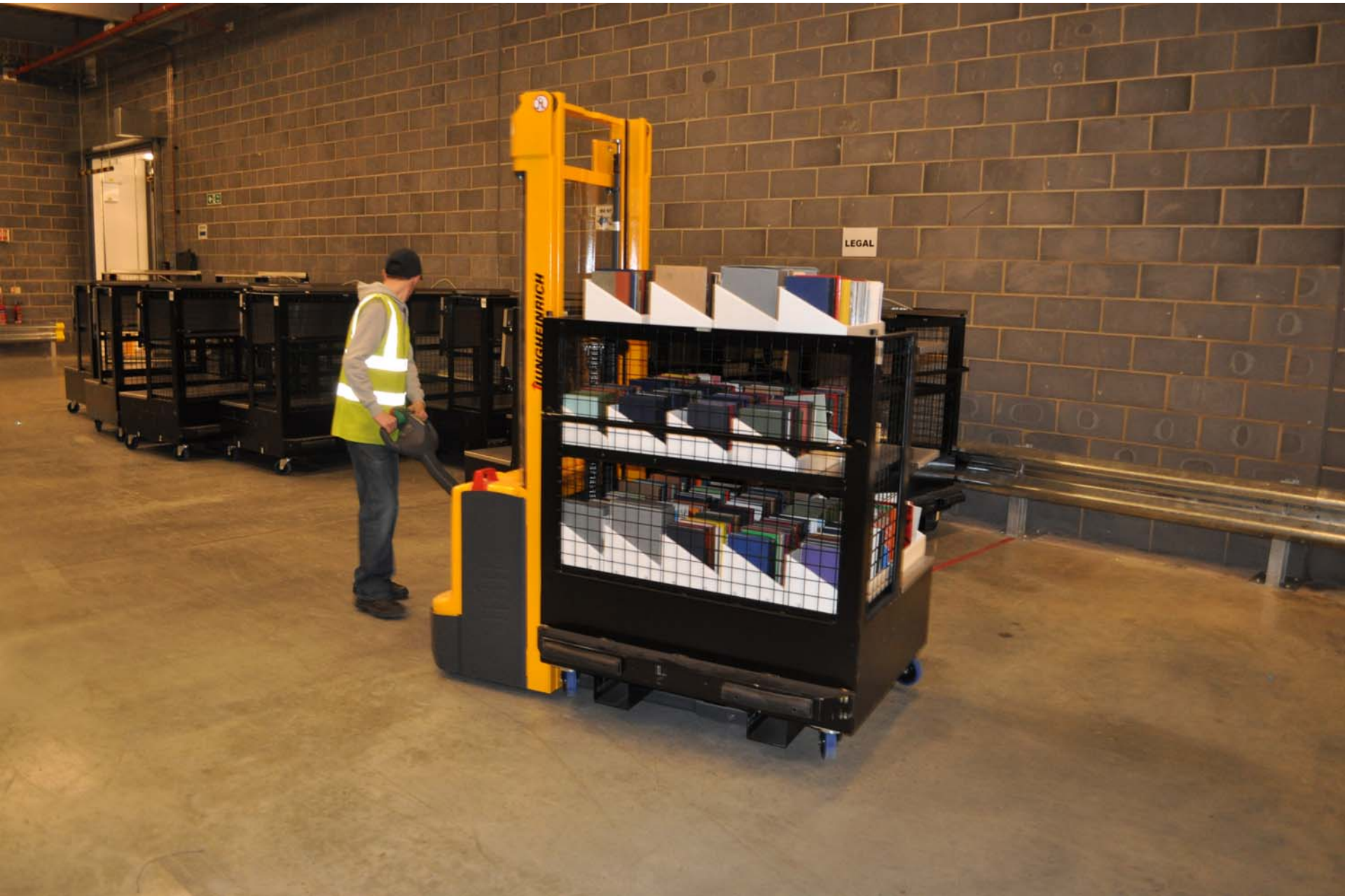
28

Item Count

BB00025652







LEGAL

JUNGHEINRICH





Bodleian Book Storage Facility

- Ingested circa 30-40,000 per day
- Currently returning average 800-1,500 volumes per day for readers, through 2 van runs per day.
- Peak in Hilary Term 2012 of over 2,200 per day.
- 11,600 boxes of printed ephemera.
- 6,700 lm of archives and manuscripts
- 11,300 lm of rare books

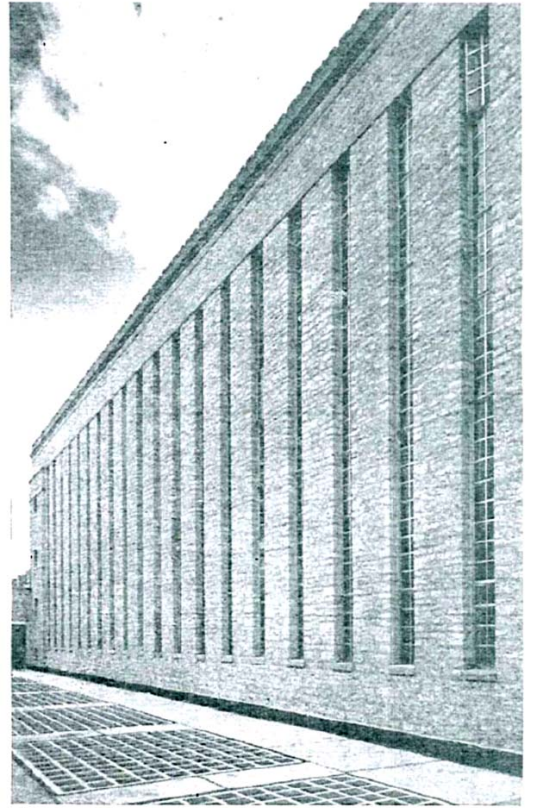






New Bodleian building

- Preservation problems
 - Good practice (BS: 5454)
 - Audit & Scrutiny
 - National Archives
 - Recent thefts
- Solutions
 - Fire protection: compartmentation, new structure, fire detection and suppression systems
- Climate control
 - New plant, BMS
- Security
 - CCTV, Access control







Design and Planning: Working with Existing Internal Fabric





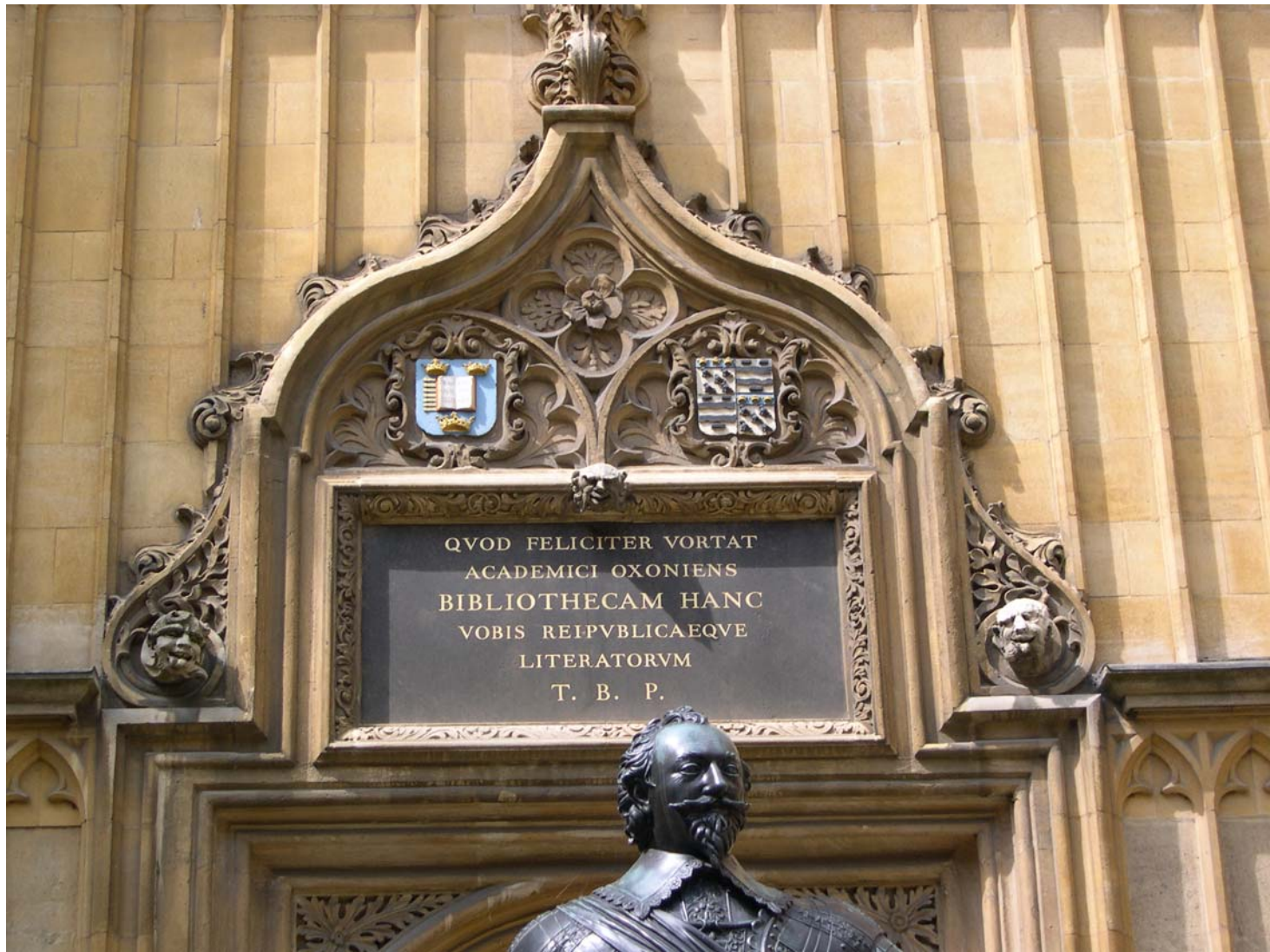
Research facilities

- Research facilities
 - Reading room space
 - Seminar & group study rooms
 - Need for lecture and presentation space
 - Integrate research centre activities: engage researchers deeply in work of special collections
 - Digital scholarship
- Solutions
 - New reading room suites
 - Four seminar rooms
 - Flexible auditorium
 - Visiting Scholars Centre/Conservation Centre
 - Digital Media Centre



Public engagement

- Small inflexible exhibition room
- No space for lectures
- No flexibility for schools, performances, etc
- Congestion in the Old Library
- Income opportunities
- Triple the exhibitions space
- New auditorium
- Flexible spaces in Blackwell Hall
- Ability to adjust visitor flows
- Shop, café, corporate hire



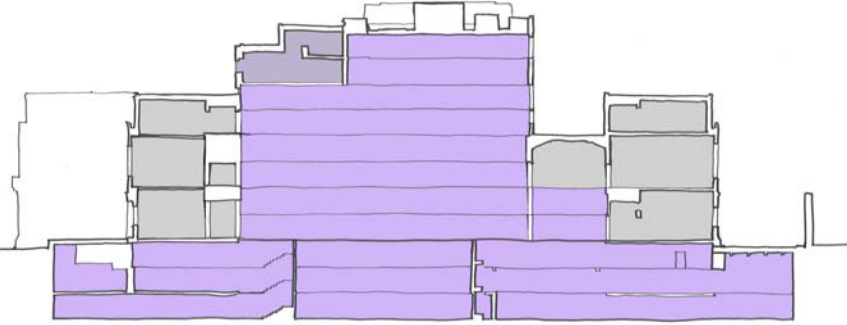
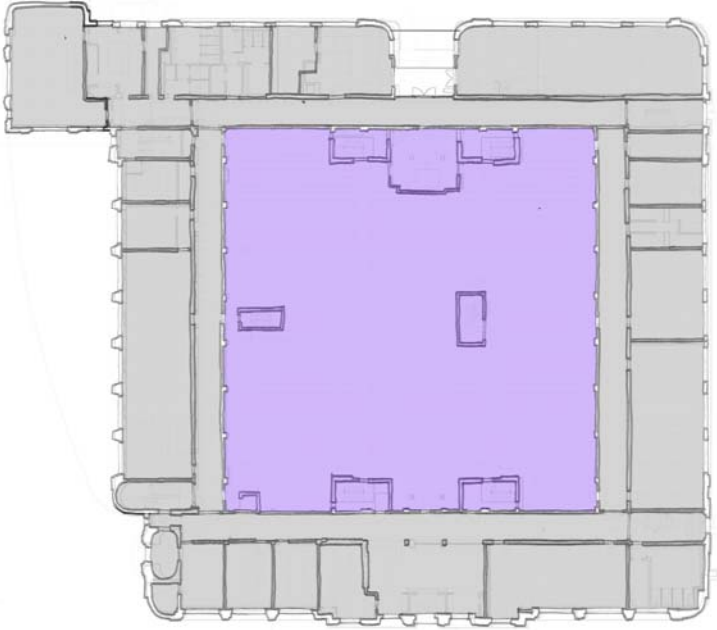
QVOD FELICITER VORTAT
ACADEMICI OXONIENS
BIBLIOTHECAM HANC
VOBIS REIPVBLICAEQVE
LITERATORVM
T. B. P.





From New Bodleian to Weston Library

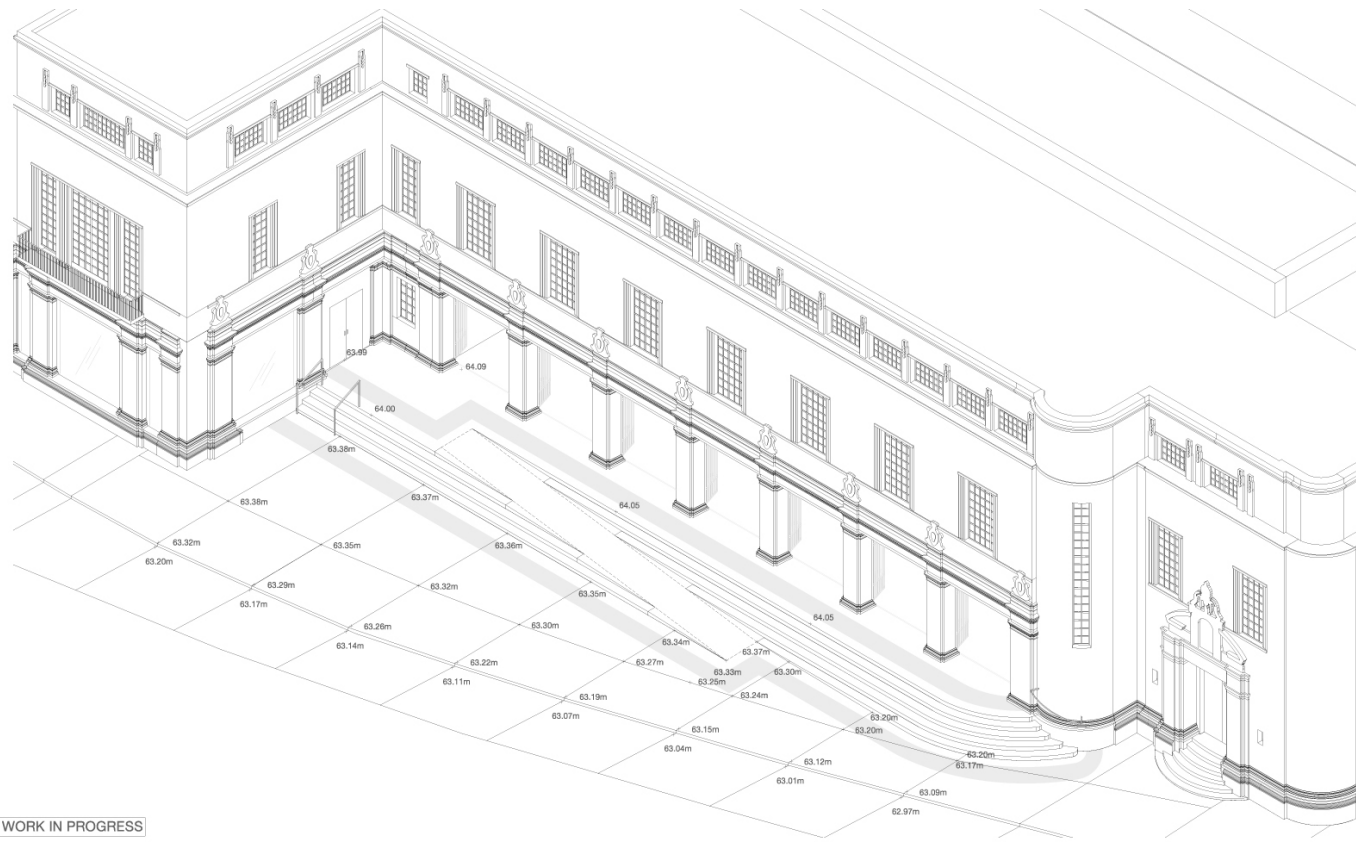
- Essential refurbishment
 - Fire safety
 - Preservation environment
 - New research facilities
 - New facilities for public engagement
- Relocate collections and staff, 2010-11
- Hand-over to Main Contractor, 1 August 2011



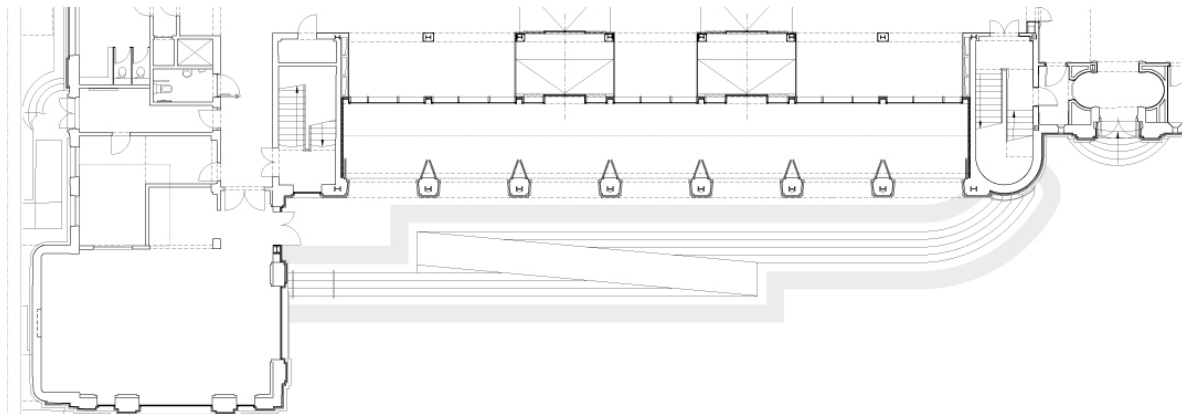




28/05/2012



WORK IN PROGRESS













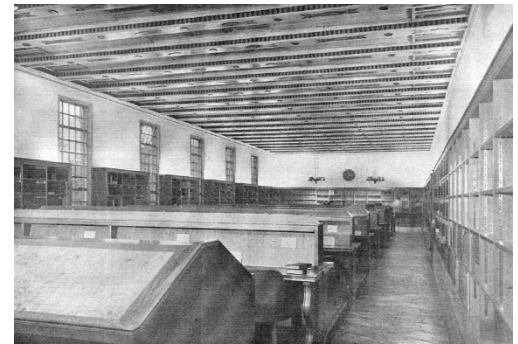
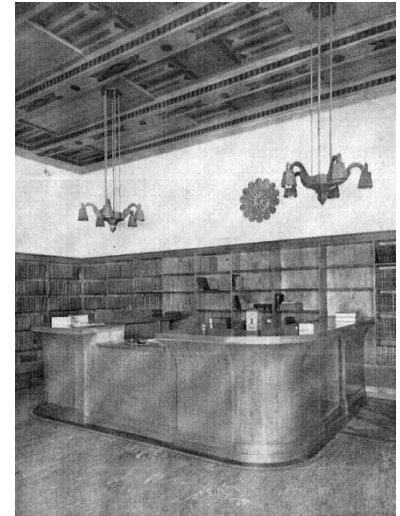


Weston Library Schedule

- Project conceived **2005**
- Architect chosen: **August 2006**
- Planning submission submitted **Jan 2010**
- Planning permission granted **May 2010**
Enabling Works (MDX, and electrical infrastructure works) **Summer 2010**
Demolition Started **August 2011**
Main Works Start **July 2012**
Fit out Start **August 2013**
Completion **August 2014**













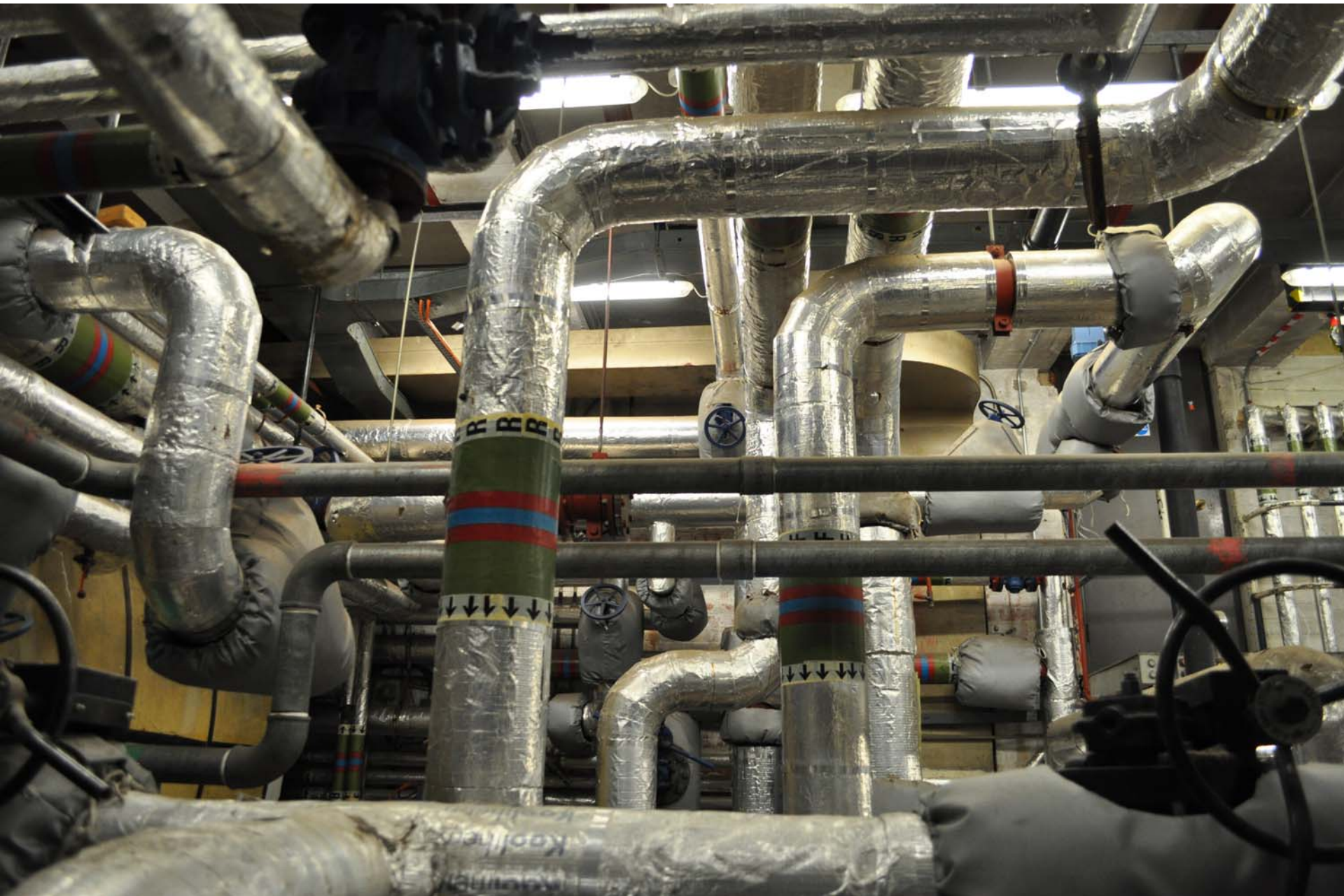
















Weston Library

- Total cost: £80.4 m
- Collections: c. 40 km os shelving for rare books, manuscripts, archives, music, ephemera, maps
- 4 reading rooms: 320 seats
- Auditorium: 120 seats
- 4 Seminar rooms
- 35 study carrells

ARCHIO 1925
KEDLESTON.
NDERS. 1930
Y EQ. AUR. 1931
IECARIUS.
HAME. 1933
LLERANA. 1933
EQ. AUR. 1938
W. 1941
ROLLS, 1946
ST. 1947
L. 1949
RUST. 1954
RN 1958
EER 1960

ROY V. SOWERS 1970
HELENA ET
MARGARETA DENEKE 1973
BENEDICTUS JUEL-JENSEN 1977
ALBERTI EHRMAN 1978
FILIUS JOANNES MEMOR
HANNIBAL PUBLIUS
SCICLUNA EQ. AUR. 1981
B.H. BLACKWELL 1984
ROBERTUS SHACKLETON 1986
PROTOBIBLIOTHECARIUS
IONA ET PETRUS OPIE 1988
DAVID VICECOMES ET
MARIA VICECOMITISSA ECCLES 1989
THE ANDREW W. MELLON
FOUNDATION 1989

THE GARFIE
FOUNDAT
DEANNA L
HEREDES
RHODES
FUNDATIO
GERTRUD
MARIAN
GERARD
THE WO
FOUN
SEBAST
BARRIE
WIGN
GEORC
VON MA
DOUG

Richard Ovenden
Deputy Librarian

richard.ovenden@bodleian.ox.ac.uk
01865 2877158

